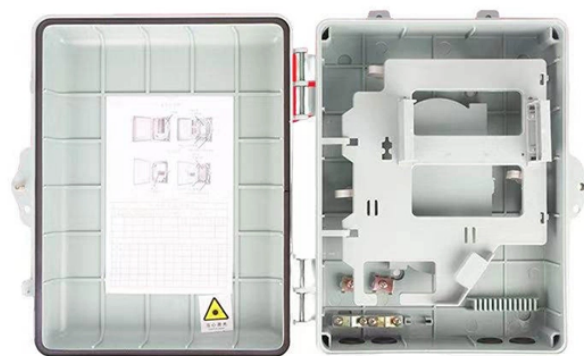


Dimensions of the hole for the distribution box



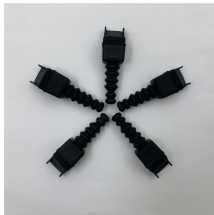
Dimensions of the hole for the distribution box



Inlet and Outlet Hole Dimensions - For concrete drop boxes, the invert of lateral outlet holes or knockouts shall be located with a minimum drop in elevation from the inlet invert of one-half ...



The hillside distribution box diagram shows the inlet-external press fit into 4" smooth wall, various dimensions of each section, outlets internal snap into 4" pipe and capacity of 8 gallons to overflow. ...



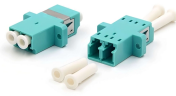
Tuf-Tite Speed Levelers™ Control the flow of effluent from the Distribution Box. Simply insert a Speed Leveler into each outlet pipe. Rotate each Speed Leveler so the flow is distributed as desired. ...



A septic distribution box is a container used to receive septic system effluent from a septic tank and to re-distribute the effluent into a network of attached drain-field or soak away bed absorption trenches ...



Give us a call and let us help you find a qualified contractor for your project.



Glue bell ends of drainage pipe to pipe stubs. If required by Health Department, connect 2'-3' of unperforated pipe to each outlet. Check level prior to backfilling. Use "speed levelers" if necessary. ...



We provide several concrete distribution boxes including a 4 hole, 7 hole, 9 hole, and 14 hole. Each D-Box has one hole for the inlet pipe and the rest are for outlets to the septic field.



We have the solution to all of your onsite needs with our 20" Distribution Box! This box is great for large or small applications. No other box allows you to choose where to set your inlets or outlets.



Provide high-density polyethylene drop or distribution box with holes punched suitable to receive locking seals. The box shall be strong, non-corrosive, lightweight, and easily installed. The box shall be of ...



Notes: 1. All dimensions are approximated. 2. 4000 PSI Concrete 3. Reinforcing - 1.6 x 1.6 WWF. Dimensions Length - 55" Width - 18" Height - 14" As Manufactured by Mershon Concrete - ...

Contact Us

For more information, pricing, or custom solutions, please contact us:

Website: <https://www.indzawo.co.za>

Email: sales@indzawo.co.za

Phone: +27 71 296 8473

Address: 22 Quantum Street, Midrand, 1685, Gauteng, South Africa

This document is for informational purposes only. Specifications subject to change without notice.

