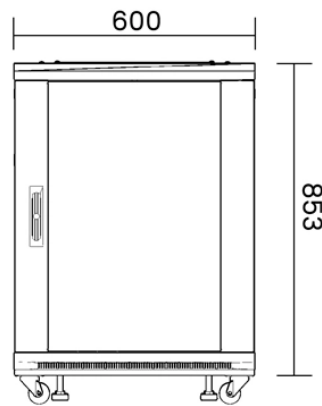


## Dimensions of Micro-module Equipment Room for Railway Communication



## Dimensions of Micro-module Equipment Room for Railway Communi



It contains principles, data, specifications, plans and economics pertaining to the engineering, design and construction of the fixed plant of railways (except signals and communications), and allied ...



Shop Drawings: For communications equipment room fittings. Include plans, elevations, sections, details, and attachments to other work. Detail equipment assemblies and indicate dimensions, ...



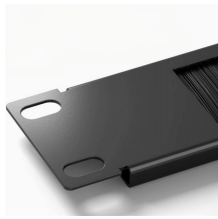
SIZE: Telecommunication Rooms (TR) shall be sized according to the usable floor space that will be served from that room. These are minimum sizes for TRs and the use of the TR should be ...



This Section defines the general design requirements for a uniform Communications Room Infrastructure that shall be followed for all OFCC Technology construction projects.



Communication Room locations are required to be positioned/located adjacent to risers to allow easy access for cable laying. Communication Rooms must be positioned with the building so that a ...



Telecommunications Rooms shall be stacked vertically on each floor, where a Telecommunications Room on each floor is required. No plumbing, HVAC, or fire protection pipes, ...



All new railway stations shall be provided with a telecommunications equipment room in accordance with this standard. Such a room need not be on the platform or within the structure of other station ...



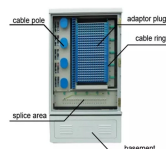
The room size shall be determined by the amount of circuits to be installed within the building as well as the Communications equipment that will operate the system and shall be determined and/or ...



This document provides standards for communications equipment rooms used by Metro Trains Melbourne. It outlines requirements for wall, floor and ceiling ...



This document provides standards for communications equipment rooms used by Metro Trains Melbourne. It outlines requirements for wall, floor and ceiling construction; clearances; lighting; ...



This section includes the specifications for constructing and building out of Telecommunications Equipment Rooms (MDF/IDFs) to be used for supporting telecommunications ...



IT Services will work together with project members to agree a network design that includes the size, location and number of communication rooms (CR); and the required quantity, capacity of cabinets ...

## Contact Us

For more information, pricing, or custom solutions, please contact us:

Website: <https://www.indzawo.co.za>

Email: [sales@indzawo.co.za](mailto:sales@indzawo.co.za)

Phone: +27 71 296 8473

Address: 22 Quantum Street, Midrand, 1685, Gauteng, South Africa

This document is for informational purposes only. Specifications subject to change without notice.

