

## Die diode laser head module diagram



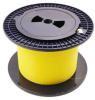
## Die diode laser head module diagram



Understand Semiconductor Laser (Laser Diode) with construction, working principle, energy band diagram, and applications. Easy exam notes with diagrams.



This product link has three options, which are sent according to your purchase options. Output Power : 5mw Wavelength : 650nm Working Voltage : 3~5V Working Temperature : +10 ~ +40C Laser ...



Learn how to use the Laser Diode Module with detailed documentation, including pinouts, usage guides, and example projects. Perfect for students, hobbyists, and developers integrating the Laser Diode ...



What is the KY-008 Laser Module? KY-008 is a laser module or laser transmitter module that uses certain semiconductor materials to emit laser beams. This module contains a laser diode, ...



By understanding the inner workings of a laser diode through a laser diode schematic diagram, you can ensure that your laser is functioning safely and correctly.



The photo below shows a typical module-mounted S.L.D. with driver circuitry. The above photo shows a green semiconductor laser diode set in a module and with driver circuitry attached.



In Fig. 1 it can be observed that the laser diode has a region where its efficiency is the greatest. The efficiency is about 30% - 35%, the rest of the power is undesirable heat in the diode that needs to be ...



Whether you want to create intricate laser-cut designs, build a laser security system, or even develop a laser-based musical instrument, the Arduino laser module puts the power of creation in your hands.



The information contained within this tutorial will give all the general information necessary to create an excellent laser diode system. For specific questions about laser diodes, mounts, and drivers please ...

## Contact Us

For more information, pricing, or custom solutions, please contact us:

Website: <https://www.indzawo.co.za>

Email: [sales@indzawo.co.za](mailto:sales@indzawo.co.za)

Phone: +27 71 296 8473

Address: 22 Quantum Street, Midrand, 1685, Gauteng, South Africa

This document is for informational purposes only. Specifications subject to change without notice.

