

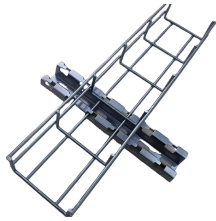
Diagram of inlet line blockage in distribution box



Diagram of inlet line blockage in distribution box



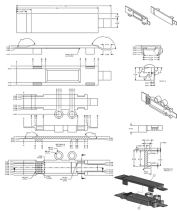
SEPTIC TANK EFFLUENT DISTRIBUTION BOXES
INSTALLATION PROCEDURE AND APPROVED
MODELS as Septic Tanks, Distribution Boxes, and
Chamber Leaching Systems Approved for Use in ...



The configuration of a Distribution Box includes
(1-3) Inlets and a varying number of outlets
Depending on the leaching needs of the system.
Please talk to one of our customer service
personnel for better ...



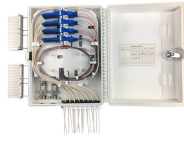
Distribution boxes are typically made of reinforced
concrete with plumbing “knock outs” into the box.
The inlet must be higher than the outlets, with all
outlets at the same level. The box must be large
enough ...



The diagram illustrates how wastewater flows from
the house into the septic tank through the inlet
pipe. Inside the tank, solid waste settles at the
bottom, while oils and greases float to the top.



A septic distribution box, also known as a D-box, is
a small container that receives the effluent from
the septic tank and distributes it evenly to the
network of attached drain fields and pipes.



Pipes can break, leach field lines clog or the distribution box can collapse. Your leach field can even lose the oxygen rich soil conditions required for well-functioning ...



Explore a comprehensive guide on septic system distribution boxes, covering design, installation, maintenance, and troubleshooting.



Pipes can break, leach field lines clog or the distribution box can collapse. Your leach field can even lose the oxygen rich soil conditions required for well-functioning system resulting in a clogged septic field ...



Septic distribution box problems explained, including how to detect issues, common causes, warning signs, and effective repair solutions to protect your system.



Here we give septic system D box installation, specifications, inspection, diagnosis, and repair, and we explain how to find the septic distribution box, drop box, or D-box by any of several methods.



Explore a comprehensive guide on septic system distribution boxes, covering design, installation, maintenance, and troubleshooting.

Contact Us

For more information, pricing, or custom solutions, please contact us:

Website: <https://www.indzawo.co.za>

Email: sales@indzawo.co.za

Phone: +27 71 296 8473

Address: 22 Quantum Street, Midrand, 1685, Gauteng, South Africa

This document is for informational purposes only. Specifications subject to change without notice.

