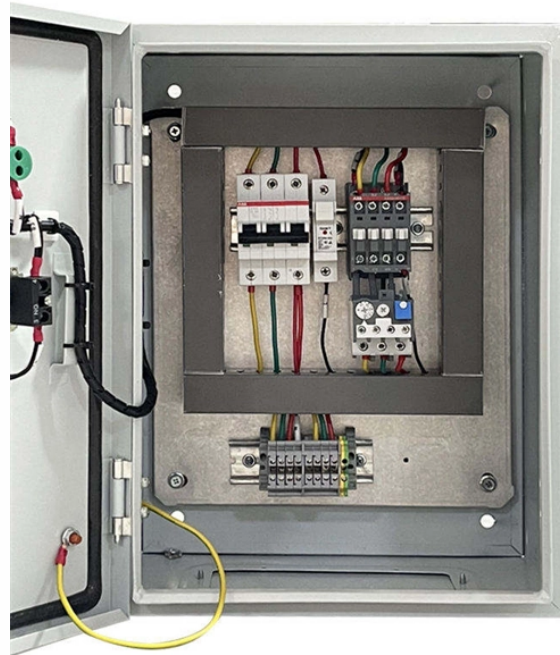


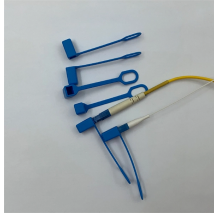
Denmark Easy-to-Install Cable Tray Supports



Overview

These special heavy duty tray hold down cable tray clamps and expansion guides are ideal for fastening tray to C-Channels and beams, such as those found on bridges. They are easy to install and reduce field labor costs since the beam clamp set screws eliminates the need to. We offer a wide range of cable tray systems to support tubing, electrical cables and instrumentation. We also. The cable trays from SILTEC are made of first-class stainless steel that prevents corrosion and ensures a good level of resistance. The width varies from 25 mm to 600 mm and the height from 25 mm to 125 mm. Our focus has always been on solutions from the field of cable support systems. I hereby consent to the processing of my personal data in accordance with EU Regulation no. Our product range includes galvanized steel and acid-proof steel cable ladders, cable trays, wire mesh trays, lighting tracks, and aluminum-frame cable management systems, socket poles, and the unipro® lighting track system.

Denmark Easy-to-Install Cable Tray Supports



The open construction prevents accumulation of flammable dust, reduces bacteria growth and limits cable heating. Our system is easy to use and install, and if you need it, you can easily extend your ...



Defem is a complete cable support system for the routing of power, data and control cables. Three finishes are available; electro-zinc, hot-dip galvanized and AISI316L acid-proof stainless steel.



These special heavy duty tray hold down cable tray clamps and expansion guides are ideal for fastening tray to C-Channels and beams, such as those found on bridges. They are easy to install and reduce ...



Our cable routing systems are easy to install and can be extended later. Our broad range of standard cable trays are particular well-suited for cabling in buildings. Cable trays with a lock allow fast cable ...



The vertical straight connector can be used to connect cable trays with the side height 60mm. Mitre joints that rise and fall up to an angle of 60° can also be realised with this connector.



We offer a wide range of cable tray systems to support tubing, electrical cables and instrumentation. Our cable trays are produced in fit for purpose materials like stainless steel, galvanized, aluminium and ...



Our cable trays are designed to withstand demanding conditions, both indoors and outdoors. Explore our catalogue and find the right cable tray for your projects, with durable products and accessories ...



We specialize in manufacturing high-quality cable support systems. Our product range includes galvanized steel and acid-proof steel cable ladders, cable trays, wire mesh trays, lighting tracks, and ...



These supports offer a robust and stable base for the trays and are designed to support heavy loads. Additionally, they provide an elevated solution that prevents damage to cables due to moisture or ...



DKC is a European leader, and offers a comprehensive range of cable tray systems and energy protection, transport and distribution solutions for civil and industrial infrastructures.



With our many years of experience, we are one of the leading manufacturers in this field. Establishing partnerships with customers is a top priority for OBO, and OBO staff are available to support ...

Contact Us

For more information, pricing, or custom solutions, please contact us:

Website: <https://www.indzawo.co.za>

Email: sales@indzawo.co.za

Phone: +27 71 296 8473

Address: 22 Quantum Street, Midrand, 1685, Gauteng, South Africa

This document is for informational purposes only. Specifications subject to change without notice.

