

Data Center Energy Pricing Formula



Overview

The most common pricing structures are per-rack unit (U) pricing for colocation, per-kilowatt (kW) pricing for power-heavy deployments, and full-cage or suite pricing for larger tenants needing dedicated space. We are pleased to announce the release of a new Berkeley Lab technical brief, Electricity Rate Designs for Large Loads: Evolving Practices and Opportunities, describing the design of retail electricity pricing and service agreements for large-load customers, such as data centers. electricity. Data center pricing varies widely depending on the type of service, the amount of space required, power draw, and contract length, but understanding the key pricing models helps businesses budget accurately. Four contract pillars dominate: 1. Pricing approach Fixed-rate blocks - Historically, operators locked. EIA's most recent Electric Power Monthly on January 26 found that the nationwide average cost of residential electricity was 17. 78 cents per kilowatt-hour (kWh) for the month of November 2025. Tech giants such as Google, Meta, Microsoft, and Amazon are predicted to spend \$364 billion this year to accelerate the construction of new data centers across the U. Together, these elements determine the total cost of ownership (TCO) and influence operational

efficiency, scalability, and return on investment. Power: Power is the single largest cost.

Data Center Energy Pricing Formula



In an interview with Harvard Law Today, Peskoe explains the ways in which data centers sometimes obscure their effect on utility prices, and why state regulators may need to radically ...



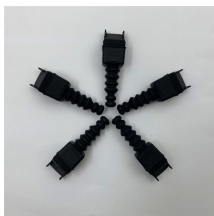
We are pleased to announce the release of a new Berkeley Lab technical brief, Electricity Rate Designs for Large Loads: Evolving Practices and Opportunities, describing the design of retail ...



Data-center electricity deals are purpose-built to deliver round-the-clock power at predictable cost while giving utilities revenue certainty and, increasingly, supporting renewable-energy...



As Northern Virginia and other regions compete to host increasingly energy-demanding data centers, affordability impacts on residents are mounting.



Unlock the secrets of data center pricing models with our comprehensive guide. Learn about colocation, metered power, and managed ...



While there is a push by some politicians of both parties to singularly blame, and in some cases scapegoat, datacenters for rising electricity prices, data from the U.S. Department of Energy's ...



Unlock the secrets of data center pricing models with our comprehensive guide. Learn about colocation, metered power, and managed services and what they mean for your business.



Lease rates for both hyperscale and wholesale data center space show that while energy prices can impact the market, other factors—namely the rapid rise of inflation—are playing a key role.



Currently, there are no legally binding energy standards that apply explicitly to operation of data centers in the private sector. For use within the federal government, the U.S. Department of ...



FEMP sponsors the Center of Expertise (CoE) for Energy Efficiency in Data Centers. CoE helps federal agencies and other organizations implement data center energy efficiency projects by supplying ...



At the core of every data center pricing model are four key pillars: Power, Space, Network, and Support. Together, these elements determine the total cost of ownership (TCO) and ...

Contact Us

For more information, pricing, or custom solutions, please contact us:

Website: <https://www.indzawo.co.za>

Email: sales@indzawo.co.za

Phone: +27 71 296 8473

Address: 22 Quantum Street, Midrand, 1685, Gauteng, South Africa

This document is for informational purposes only. Specifications subject to change without notice.

