

Custom-made large-span cable trays for workshops



Custom-made large-span cable trays for workshops



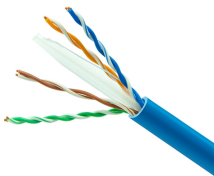
Shop high-quality large span cable trays from reliable suppliers. Durable, versatile, and perfect for various infrastructural and electrical applications.



Snake Tray has been designing and manufacturing cable trays (cable management systems), power distribution and enclosures since 1996! Our goal is to provide our customers with cost-effective ...



A custom is an activity, a way of behaving, or an event which is usual or traditional in a particular society or in particular circumstances. The custom of lighting the Olympic flame goes back centuries.



Look up custom or customs in Wiktionary, the free dictionary. Custom, customary, or consuetudinary may refer to:



Custom definition: A common tradition or usage so long established that it has the force or validity of law.



It is suitable for laying scenarios with relatively large span requirements, and tries laying control cables for computers, communication cables, thermocouples and other sensitive systems.



custom (not comparable) Made or done in a way adjusted to fit the needs of a particular person or group (e.g., customer, health care patient, do-it-yourselfer), and thus specialized and, in ...



CUSTOM definition: 1. a way of behaving or a belief that has been established for a long time: 2. something you.... Learn more.



Engineered for long distance cable routing, long-span cable tray offers high load capacity and strong structural durability for industrial applications.



The meaning of CUSTOM is a usage or practice common to many or to a particular place or class or habitual with an individual. How to use custom in a sentence. Synonym Discussion of Custom.



Professional cable tray manufacturer providing high-quality cable management systems for industrial, commercial, and infrastructure projects.



Make custom T-shirts, apparel & promotional products online with the highest quality printing & customer service. Easy Ordering. Fast & Free Shipping.



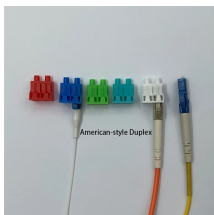
custom a practice followed as a matter of course among a people; a habitual practice of an individual: It is her custom to take a walk every night before dinner.



It is the custom for the bride to wear a white dress on her wedding day. According to custom, the festivities begin at dusk. It's a matter of custom. We went through customs at the airport without any ...



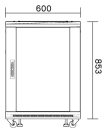
Large span cable trays for power plants, tunnels, and industrial projects. Durable, corrosion-resistant, and customizable. Manufacturer & exporter.



Discover industry-leading customized cable tray solutions featuring advanced materials, intelligent design, and complete regulatory compliance. Perfect for industrial and commercial applications ...



Our goal is to provide durable, dependable cable trays, raceways, outlets, covers, and more at a competitive and affordable price point so that your projects can be completed with a quality product ...



We produce FRP, epoxy resin, stainless steel, aluminum, channel, perforated, ladder, large span, wire mesh and combined cable trays for laying cables.



Custom cable trays are designed to fit the exact dimensions and layout of your project. This precision minimizes wasted space, optimizes cable management, and ensures a neat and organized installation.



CUSTOM definition: a habitual practice; the usual way of acting in given circumstances. See examples of custom used in a sentence.

Contact Us

For more information, pricing, or custom solutions, please contact us:

Website: <https://www.indzawo.co.za>

Email: sales@indzawo.co.za

Phone: +27 71 296 8473

Address: 22 Quantum Street, Midrand, 1685, Gauteng, South Africa

This document is for informational purposes only. Specifications subject to change without notice.

