

## Custom Process for Low-Noise Array Waveguide Gratings in Power Distribution Automation



## Custom Process for Low-Noise Array Waveguide Gratings in Power D



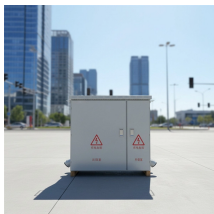
CUSTOM definition: 1. a way of behaving or a belief that has been established for a long time: 2. something you.... Learn more.



custom (not comparable) Made or done in a way adjusted to fit the needs of a particular person or group (e.g., customer, health care patient, do-it-yourselfer), and thus specialized and, in ...



In this paper, we compare the effect of output waveguide configurations on the performance of AWGs. The AWG with an output waveguide converging on the grating circle had ...



Custom definition: A common tradition or usage so long established that it has the force or validity of law.



Here, for the first time to the best of our knowledge, we demonstrate an  $8 \times 8$  100 GHz spacing AWG router and a  $6 \times 6$  200 GHz spacing AWG multi/demultiplexer on the 800-nm-thick Si 3 ...



In this study, two SiN-based Arrayed Waveguide Gratings (AWGs) were designed and fabricated: one serving as a wavelength multiplexer (MUX) and the other as a demultiplexer ...



This leads to the first implementation of arrayed waveguide gratings on X-cut thin-film lithium niobate with various configurations and high-performances.



Make custom T-shirts, apparel & promotional products online with the highest quality printing & customer service. Easy Ordering. Fast & Free Shipping.



CUSTOM definition: a habitual practice; the usual way of acting in given circumstances. See examples of custom used in a sentence.



Look up custom or customs in Wiktionary, the free dictionary. Custom, customary, or consuetudinary may refer to:



A custom is an activity, a way of behaving, or an event which is usual or traditional in a particular society or in particular circumstances. The custom of lighting the Olympic flame goes back centuries.



custom a practice followed as a matter of course among a people; a habitual practice of an individual: It is her custom to take a walk every night before dinner.



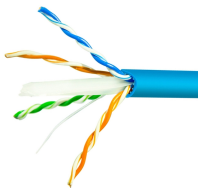
We start with the eigenmode solver to calculate the modal properties of a single waveguide and a slab. This is followed by the varFDTD simulation to further characterize the properties of beam that gets ...



The low crosstalk silicon AWGs with 32-channel and 100-GHz spacing are designed and fabricated by process optimization. A compact design is used to avoid accumulation of phase errors.



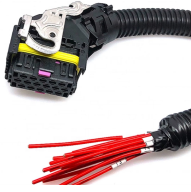
This leads to the first implementation of arrayed waveguide gratings on X-cut thin-film lithium niobate with various configurations and high-performances.



In this review, an overview of the available methods for improving the bandwidth, spectral resolution, and transmission function shape of AWGs is provided. The working principle as well as the...



The meaning of CUSTOM is a usage or practice common to many or to a particular place or class or habitual with an individual. How to use custom in a sentence. Synonym Discussion of Custom.



To achieve miniaturization and integration of FBG interrogator, we designed and fabricated a 36-channel array waveguide grating (AWG) on silica-based planar lightwave circuits (PLC) as a key device in a ...



An SW waveguide is a grating structure with a period shorter than the wavelength of light that suppresses diffraction and acts as a homogenous medium with an analogous refractive index.



It is the custom for the bride to wear a white dress on her wedding day. According to custom, the festivities begin at dusk. It's a matter of custom. We went through customs at the airport without any ...

## Contact Us

For more information, pricing, or custom solutions, please contact us:

Website: <https://www.indzawo.co.za>

Email: [sales@indzawo.co.za](mailto:sales@indzawo.co.za)

Phone: +27 71 296 8473

Address: 22 Quantum Street, Midrand, 1685, Gauteng, South Africa

This document is for informational purposes only. Specifications subject to change without notice.

