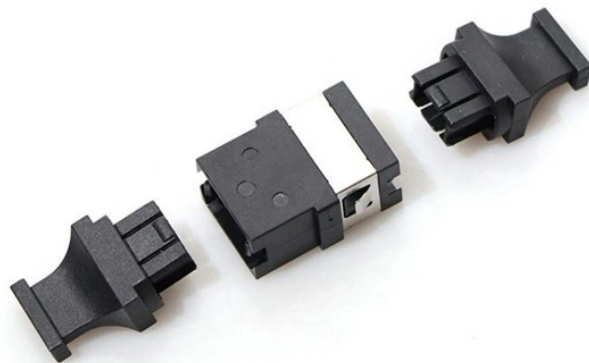


## Correct Wiring Method for Indoor Electrical Distribution Boxes on Construction Sites



### Overview

Check for proper IP/NEMA ratings and material quality. Ensure safe placement: install in dry, accessible areas with good ventilation and at appropriate height (typically ~1. The provisions of this paragraph do not apply to conductors which form an integral part of equipment such as motors, controllers, motor control centers and like equipment. However, the key to a safe and reliable system lies in proper installation. If it's done poorly, you risk short circuits, fire hazards, or system failure. Done right, it ensures. This article examines how modern portable power cabinet systems—such as E-abel distribution boxes paired with industrial waterproof plug connectors—improve temporary power safety on construction sites. Temporary wiring on construction sites must comply with the electrical safety standards in 29 CFR 1926, Subpart K.

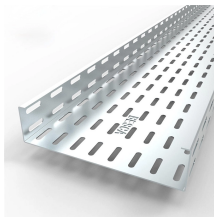
## Correct Wiring Method for Indoor Electrical Distribution Boxes on Co



This article aims to provide a comprehensive overview of the essential guidelines for safe temporary electrical installations on construction sites, focusing on Best Practices, regulatory frameworks, and ...



These verbs mean to make right what is wrong. Correct refers to eliminating faults, errors, or defects: I corrected the spelling mistakes. The new design corrected the flaws in the earlier version.



This guide explains the key NEC junction box requirements, including box fill, splice rules, accessibility, grounding, outdoor use, common violations, and how to choose the right metal junction ...



In this blog post, you'll get actionable tips on how to ensure compliance with NEC (National Electric Code) and OSHA (Occupational Safety and Health Administration) standards.



**CORRECT** definition: 1. in agreement with the true facts or with what is generally accepted: 2. taking or showing great.... Learn more.



Learn what OSHA requires for temporary wiring on construction sites, from grounding and GFCI protection to overhead clearances and employer liability.



work requires electrical power for many purposes. However, exposure to weather, frequent relocation, rough use and other conditions not normally encountered with conventional wiring systems ...



to scold or punish in order to improve: Don't correct your child in public. to work against the effect of (something undesirable): Her contact lenses correct her poor eyesight.



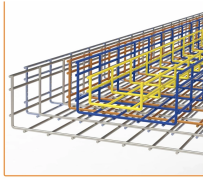
Metal raceways, cable armor, and other metal enclosures for conductors shall be metallically joined together into a continuous electric conductor and shall be so connected to all boxes, fittings, and ...



When something is true, legitimate or right, you can say it's correct, using the word as an adjective. It can also be a verb; to correct wrong answers is to adjust them to make them right.



Learn how E-abel temporary power cabinets and industrial waterproof plug systems improve construction site electricity safety, reduce wiring errors, ...



Learn how to install a distribution box safely and correctly. Covers wiring, placement, standards, and expert tips for a compliant setup.



In this video we are showing a complete Construction Site Electrical Distribution Panel setup. This includes MCCB, MCB, DB boxes, cable management, earthing and load distribution for...



**CORRECT** definition: to set or make true, accurate, or right; remove the errors or faults from: The new glasses corrected his eyesight. See examples of correct used in a sentence.



- We may conclude, for example, that 90 percent. of convictions were factually correct.
- Is the document factually correct and full?
- Knowledge of how word meanings combine at the sentence level can rule ...



If something is correct, it is in accordance with the facts and has no mistakes.



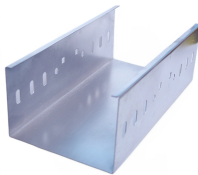
correct, accurate, exact, precise, nice, right mean conforming to fact, standard, or truth. correct usually implies freedom from fault or error.



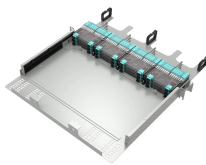
All 120-volt, single-phase, 15- and 20-ampere receptacle outlets on construction sites, which are not a part of the permanent wiring of the building or structure and which are in use by employees, shall ...



correct (third-person singular simple present corrects, present participle correcting, simple past and past participle corrected) (transitive) To make something that was wrong become ...



Correct definition: To remedy or counteract (a defect, for example).



Learn how E-abel temporary power cabinets and industrial waterproof plug systems improve construction site electricity safety, reduce wiring errors, and prevent downtime in temporary ...

## Contact Us

For more information, pricing, or custom solutions, please contact us:

Website: <https://www.indzawo.co.za>

Email: [sales@indzawo.co.za](mailto:sales@indzawo.co.za)

Phone: +27 71 296 8473

Address: 22 Quantum Street, Midrand, 1685, Gauteng, South Africa

This document is for informational purposes only. Specifications subject to change without notice.

