

Correct Usage of Fiber Optic Switches



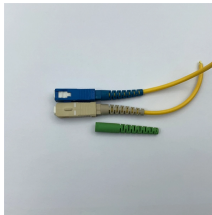
Correct Usage of Fiber Optic Switches



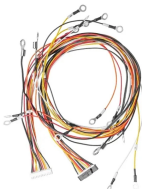
**Researching Fiber Optic Switches? Start with this definitive resource of key specifications and things to consider when choosing Fiber Optic Switches



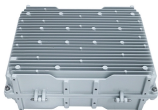
This document describes how to troubleshoot fiber optic interfaces by addressing some of the fiber optic module and cabling specifications.



Fiber-optic switches can be useful for general testing purposes in fiber optics. For example, instead of manually reconnecting fiber-optic connectors too often, one ...



Fiber optic switches are devices used to control the flow of light in fiber optic networks. They are used in a wide range of applications, including telecommunications, data centers, industrial ...



If you want to achieve the highest speed and distance in the cabling between two or more switches, without a doubt, the best option is the fiber optic connection and using the SFP or SFP + ...



This guide delves into the common uses of optical switches, the advantages they bring to each application, and the criteria for selecting the most suitable switch for your specific needs.



Proper installation of multimode fiber optic switches is crucial to maximize their potential and ensure long-term network stability. When installing these switches, several factors need careful attention. ...



This blog will explore the fundamentals of fiber optic switches, covering types, advantages, and considerations for selecting a model to meet project requirements.



It differs from conventional switches primarily in its use of optical fiber cables as the transmission medium. This technology offers significant advantages in speed and resistance to ...



This article will guide you through the process of troubleshooting fiber optic connections, with a focus on ensuring proper TX and RX alignment and how to correctly switch patch cables to ...



Fiber-optic switches can be useful for general testing purposes in fiber optics. For example, instead of manually reconnecting fiber-optic connectors too often, one should install a switch where this can be ...



To prevent such a problem optical switches can be employed to actually steer the optical signals to and from the node when power is present and the node is operating properly or to completely bypass the ...

Contact Us

For more information, pricing, or custom solutions, please contact us:

Website: <https://www.indzawo.co.za>

Email: sales@indzawo.co.za

Phone: +27 71 296 8473

Address: 22 Quantum Street, Midrand, 1685, Gauteng, South Africa

This document is for informational purposes only. Specifications subject to change without notice.

