

Core switch prompts IP conflict



Overview

Confirm the conflict first by checking ARP tables, DHCP leases, and switch MAC data before making changes. yes that MAC address 0024. 9c00 is in use on the core switch and used by all SVIs defined on it. The difficult part is to understand why the distribution switch has built that ARP entry and the DHCP server sees it as a DHCP client to which it provided the conflicting IP address Start by. Hey, so if you're dealing with an IP conflict on remote computers (you can't physically be there, and you don't know which computers have the same IPs), how do you find the conflict and resolve it?

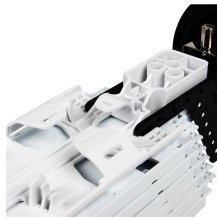
Archived post. On top of this, many IP conflict. This is exactly what happens inside your router when an IP Address Conflict occurs. The result?

Total connectivity blackout. If the router receives ICMP Echo Reply message (response to ping), the address is obviously in use.

Core switch prompts IP conflict



Confirm the conflict, determine whether DHCP or static assignments are responsible, fix the source, and enforce safeguards through IP planning and IPAM. This guide walks you through a ...



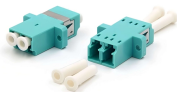
However, outside of this device or another router on the network, is it possible that one of the ubiquity access points or network switches is triggering IP address conflicts.



As a result, the switch tried to assign IP addresses which were already being used and you got the messages. Use "clear ip dhcp conflict *" to clear the IP address conflicts and try again.



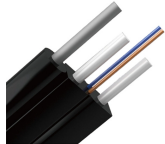
Finding and solving IP conflict issues (your way)
Hey, so if you're dealing with an IP conflict on remote computers (you can't physically be there, and you don't know which computers have the same IPs), ...



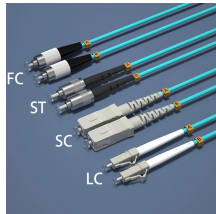
You will often see a popup saying "There is an IP address conflict with another system on the network." To fix this, you need to force a refresh of the TCP/IP stack.



The difficult part is to understand why the distribution switch has built that ARP entry and the DHCP server sees it as a DHCP client to which it provided the conflicting IP address



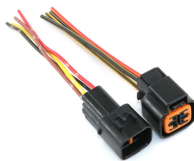
This incident mirrors a growing crisis: 58% of enterprises report weekly network outages linked to IP conflicts (per 2023 Gartner survey). Let's dissect why your switches are screaming about ...



Do you know how to find, solve, and avoid IP address conflicts in the network? Learn about the best solutions for IP conflicts and recommended software.



Time consuming detection of the source of IP conflicts may cause many issues related to distracted connectivity especially on large networks. The new feature helps the administrator to find out the ...



I totally fucked up our network core switch and everything is down right now I'm just an apprentice and I don't know what I've done wrong! We have a pair of Dell N3224P-ON switches and today's morning ...

Contact Us

For more information, pricing, or custom solutions, please contact us:

Website: <https://www.indzawo.co.za>

Email: sales@indzawo.co.za

Phone: +27 71 296 8473

Address: 22 Quantum Street, Midrand, 1685, Gauteng, South Africa

This document is for informational purposes only. Specifications subject to change without notice.

