

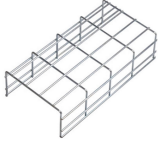
Core Switch Dual and Single Optical Ports



Overview

We break down 1G (SX/LX) and 10G (SR/LR) compatibility, DDM features, and why OEM coding is critical for stability. L3 managed 10G uplink Ethernet core routing switch with 8*10/100/1000M RJ45 ports and 12*1/10G SFP+ fiber ports. Built-in 75W power supply and supports 1U/19" cabinet installation. The ONV58008-12TFM is a high-performance L3 managed switch, which is a new generation convergence 10G switch for. A fiber media converter takes an Ethernet signal on copper (RJ-45) and converts it to an optical signal on fiber, or vice versa. There are also fiber-to-fiber versions that translate between different fiber types, wavelengths, or distances. A compact 1U 400G switch built for AI clusters, storage fabrics, and high-speed aggregation, featuring four 400G QSFP56-DD ports, dual 10 Gigabit. This guide explores the evolution from 1G to 10G and how to select the right module for your deployment. Definitions: The Difference One "Plus" Makes SFP (Small Form-factor Pluggable) Originally designed to replace the bulky GBIC, the standard SFP supports speeds up to 1. The dual SFP fiber ports can be configured to provide 1:1 uplink protection.

Core Switch Dual and Single Optical Ports



This switch features a modular power supply design for a high availability architecture. The hot-swappable design means that power supplies can be replaced without affecting switch operation.



Cisco Catalyst 1000 Series Fast Ethernet switches provide support for the following features: 24 or 48 Fast Ethernet ports with line-rate forwarding performance. Two Gigabit Small Form ...



The MSH2K is ideal for optimizing existing networks and as the foundation for new networks. Its high-capacity, multi-capability switch and integrated DWDM translate directly into reduced network costs ...



Every minute an employee waits for an unresponsive application - and every minute your network is down - has an impact on your bottom line.



Whether you choose single-fiber BiDi for fiber savings or dual-fiber for simplicity, the fundamentals are the same: match speeds and wavelengths, plan your connectors, and keep optics ...



Both plug into the same sized switch ports, and both use LC fiber connectors. Yet, mistaking one for the other can lead to link failures or wasted budget. For OEM buyers and network ...



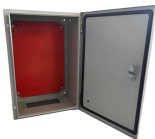
In this application diagram, the 2GXT functions as a dual-channel media converter, providing connectivity between two fiber links and two RJ-45 ports on a copper switch.



Whether you choose single-fiber BiDi for fiber savings or dual-fiber for simplicity, the fundamentals are the same: match speeds and wavelengths, plan ...



With 16 Gigabit Ethernet ports and 2 SFP+ 10G uplink ports, you get all the connectivity you need without unnecessary bulk. Stack two units side by side in a single 1U rack space for even greater ...



With the trend of high speed Ethernet, 10/40/100Gbps, Edgecore switches offer a complete set of advanced software features that will easily satisfy the demands of enterprises and SMBs everywhere.



L3 managed 10G uplink Ethernet core routing switch with 8*10/100/1000M RJ45 ports and 12*1/10G SFP+ fiber ports. Built-in 75W power supply and supports 1U/19" cabinet installation.

Contact Us

For more information, pricing, or custom solutions, please contact us:

Website: <https://www.indzawo.co.za>

Email: sales@indzawo.co.za

Phone: +27 71 296 8473

Address: 22 Quantum Street, Midrand, 1685, Gauteng, South Africa

This document is for informational purposes only. Specifications subject to change without notice.

