

## Copper busbar standards for distribution boxes



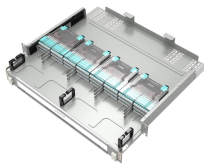
### Overview

This guide explains how proper busbar torque specification, contact resistance, and international standards ensure safe, efficient performance in modern electrical enclosures—with expert insights from E-abel. PMAX H is a patented range of busbar trunking that is utilised within building and industrial applications to deliver power to electrical loads. It is an alternative to traditional cabling and provides numerous advantages to the Installer and Client including savings on space, time and cost. There. Drawing on international standards, long-term field data, and enclosure-level design experience, we clarify best practices for copper busbar joints —helping designers, engineers, and project managers make safer and more cost-effective decisions. 5% annually through 2032, an increase that's driven by several key factors. A recent study. (1) Add Top Hat Rails, catalog number 141A-AHR45, page 23, to a module when a 141C-X40 (Adapter Extension Module) is being added to typically support the contactor on a 3 component starter. See also CrossBoard Universal Adapter Installation Instructions, publication 141C-IN004 for more information.

## Copper busbar standards for distribution boxes



This guide explains how proper busbar torque specification, contact resistance, and international standards ensure safe, efficient performance in modern electrical enclosures—with ...



Copper is renowned for its high electrical conductivity, typically measured in % IACS (International Annealed Copper Standard), making it the ...



This standard covers busbars used for low-voltage assemblies, power distribution, photovoltaic power systems, and electrical energy control. The IEC 61439 busbar standard also ...



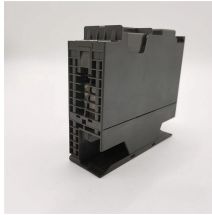
Learn the IEC standard for busbar sizing as per IEC 61439, including current-carrying capacity, temperature rise limits, and design criteria for safe and efficient electrical distribution systems.



The main factors which help in temperature management are the busbar design and material (ETP with 99.9% purity of copper) and low density of current apart from the well studied connection points to ...



While compliance and safety are major players in the move to busbar power, the need to optimize the use of space inside an industrial enclosure and the demand for faster, more efficient configuration ...



Busbar Size Chart (Copper & Aluminum) Below is a practical busbar size chart commonly used in electrical engineering applications. These standard dimensions help engineers select the ...



Copper is renowned for its high electrical conductivity, typically measured in % IACS (International Annealed Copper Standard), making it the preferred choice for busbars in power ...



Standard Busbar Adapters without electrical connections include two connection clips. They are intended to form bigger platforms; for example: for reversing starters, starters with Smart Motor ...



Busbar sizing calculator for copper and aluminum per IEC 61439. Current rating, temperature rise, short-circuit forces, and skin effect. User-selectable busbar dimensions.



PMAX H is a patented range of busbar trunking that is utilised within building and industrial applications to deliver power to electrical loads. It is an alternative to traditional cabling and provides numerous ...

## Contact Us

For more information, pricing, or custom solutions, please contact us:

Website: <https://www.indzawo.co.za>

Email: [sales@indzawo.co.za](mailto:sales@indzawo.co.za)

Phone: +27 71 296 8473

Address: 22 Quantum Street, Midrand, 1685, Gauteng, South Africa

This document is for informational purposes only. Specifications subject to change without notice.

