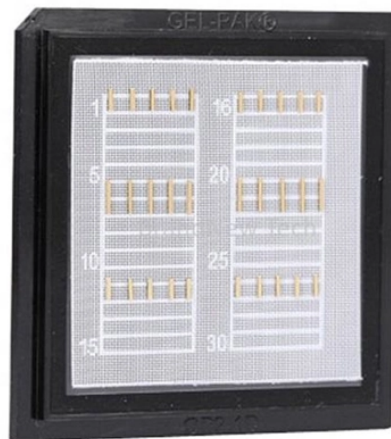


Control of small busbar support



Overview

This article details the comprehensive standards for installing and inspecting busbars, including support brackets, insulators, and bus duct systems. You'll learn essential guidelines and quality checks to ensure safety, reliability, and compliance in your electrical. Since 1989 the standard for Industrial Control Equipment, UL 508 had been the primary industry standard to which components are certified in the U. In 2017, UL 508 harmonized with IEC 60947 for low voltage switchgear and control gear to become UL 60947 - further cementing IEC devices as the. Eaton offers numerous busbar manufacturing technologies, ensuring the right busbar for every application. Our primary manufacturing processes include progressive stamping, Computer Numerical Control (CNC) bending and our RigiFlex™ technology that delivers flexible solutions. We specialize in both. The use of busbar systems with their versatile rail-adaptable connection, switching and installation devices is an ideal and cost-effective electrotechnical enhancement of modern distribution boards thanks to their small footprint, modular design and quick assembly contacts. There is a notable. DEFINITIONS. Types: Benefits: Discover how to achieve fast and reliable cabling thanks to Easy 9 comb busbar. The. A well-designed

busbar system ensures minimal energy losses, improved reliability, and enhanced safety.

Control of small busbar support



Are you aware that improper installation of busbars can lead to costly and dangerous electrical failures? This article details the comprehensive standards for installing and inspecting ...



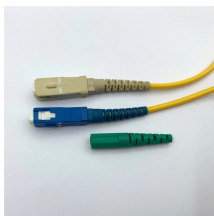
A well-designed busbar system ensures minimal energy losses, improved reliability, and enhanced safety. This guide provides a detailed technical description, calculations, design ...



Find support resources for all your needs, in one place. Design a flexible and efficient power distribution system with Schneider Electric UK's innovative busbar systems. Explore Canalis busbars for a ...



For busbar systems, the maximum working current is determined primarily by the maximum tolerable working temperature, which is, in turn, determined by considerations such as ...



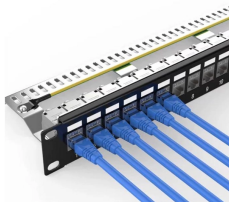
The RiLine and RiLine Compact busbar systems provide mission-critical all-around contact protection for a safer manufacturing environment on the production floor and prevent unnecessary downtime or ...



Modular busbar systems for control panels consist of pre-engineered components designed to make power connections with common solid copper conductors. The system can be configured in varying ...



Eaton offers numerous busbar manufacturing technologies, ensuring the right busbar for every application. Our primary manufacturing processes include progressive stamping, Computer ...



Busbar protection may simultaneously trip a number of bus segments or even an entire busbar of a substation and the fast elimination of busbar faults is critical to ensure that the transmission system ...



The Geniflex® Busbar Support is the universal key to simpler and, above all, faster busbar installation in modern control cabinet construction. It enables simplified in ...



The use of busbar systems with their versatile rail-adaptable connection, switching and installation devices is an ideal and cost-effective electrotechnical enhancement of modern distribution boards ...



It defines the optimum busbar configuration depending on the electrical characteristics of the panel, in compliance with standard IEC 61439-1. It runs in a Windows®



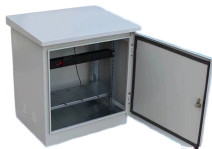
Insulating busbar supports enable the fixing of copper or aluminum busbars and are tested to hold them safely during a short circuit.



The user must control the busbar resistance and makes sure that in the worst case current condition, the drop is not higher than 0.3 V. If it is not possible, this option cannot be used.



CABS Module Kit, UL® Module kit allows for custom busbar support creation with flexibility to select distance between phases and supports, 3 phase.



Our busbar hangers are available with 3 or 4 phases. Depending on the power requirement, 1 to 3 bars per phase can be varied. The bar lengths can be varied depending on the number of phases, the ...

Contact Us

For more information, pricing, or custom solutions, please contact us:

Website: <https://www.indzawo.co.za>

Email: sales@indzawo.co.za

Phone: +27 71 296 8473

Address: 22 Quantum Street, Midrand, 1685, Gauteng, South Africa

This document is for informational purposes only. Specifications subject to change without notice.

