

Construction of power collection line cable tray supports



Construction of power collection line cable tray supports



The load capacity of the cable trays according to the support width can be read off in the diagram using load curves - here, shown as an example for a cable tray with the tray widths 100 to 600 mm.



MP Husky manufacturers Cable Tray Systems, Cable Bus System, Wire Mesh/Wire, Cable Tray, & Cable Management Systems. Our cable support systems & power distribution are CSA UL NEMA ...



Fabricated in numerous styles (wiremesh, ladder, ventilated trough, channel, and solid-bottom) and sizes, cable tray provides the greatest versatility among cable support systems, while offering ...



This guide covers the critical steps, from selecting the right electrical cable tray and performing accurate cable fill calculations to managing a safe cable pull through and ensuring all bonding and grounding ...



Galvanic corrosion must be taken into account within the whole cable management system and makes it essential to choose the right supports, accessories (coupling, screws, equipotential bonding, etc).



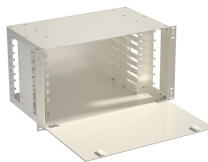
In designing supports for a cable tray system, consideration should be given to the loads associated with future cable additions and any additional loading that may be applied to the cable tray system (e.g., ...



Refers to the approximate height of a cable tray used for specifying. Selecting a specific height will show cable trays with that height, as well as cable tray accessories compatible with that height.



Our wind certification report provides you with list of acceptable B-Line series cable tray supports, fittings and covers based off of the environmental conditions, cable loading, and type of cable tray in your ...



Snake Tray has been designing and manufacturing cable trays (cable management systems), power distribution and enclosures since 1996! Our goal is to provide our customers with cost-effective ...



The document provides details on the design of a cable tray mechanical support system, including specifications for cable tray sleepers, impeded steel plates, and concrete foundations.

Contact Us

For more information, pricing, or custom solutions, please contact us:

Website: <https://www.indzawo.co.za>

Email: sales@indzawo.co.za

Phone: +27 71 296 8473

Address: 22 Quantum Street, Midrand, 1685, Gauteng, South Africa

This document is for informational purposes only. Specifications subject to change without notice.

