

Construction of Optical Cable Towers

Pre-Terminated Patch Panel



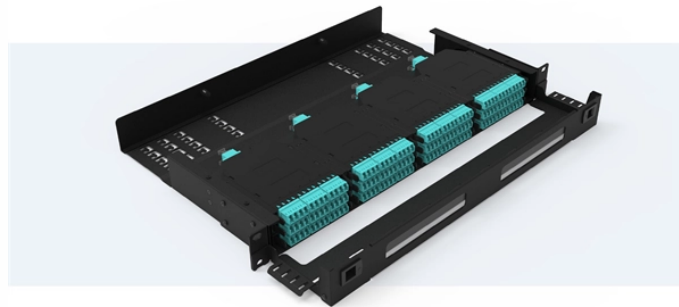
Standard 19" width



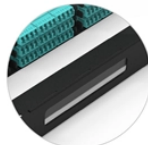
Max 144 fibers in 1U



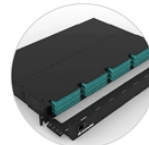
MPO/Fusion Dual-Purpose



Removable Cable Management Tray



Transparent Front Cover



High-Quality Matte Coated Steel



Construction of Optical Cable Towers



Get a high-level overview of the fiber construction stages and what to expect. This comprehensive guide explains each step of the process, helping you set realistic ...



Optical Fiber Cable installation processes vary depending on local conditions, route complexity, and regulatory requirements. The following general steps outline the installation process:



These projects involve installing fiber optic cables through various methods, including aerial attachment to utility poles, underground burial in trenches, or specialized techniques like ...



Learn how fiber optic network construction works—from site survey and permits to aerial vs underground fiber cable installation, splicing, and FTTH connections.



While many different types of fiber optic cable exist, singlemode fiber (SMF) and multimode fiber (MMF) appear most often in tower installations. In general, SMF can operate at a higher bandwidth than MMF.



Deploying fiber above ground on poles or towers removes the need for underground digging and is particularly useful when the ground is uneven, rocky or both. Aerial installation is generally much less ...



Next, we'll dig into the key components of telecommunications construction, exploring the roles of fiber optic and copper cables, communication ...



Before the fiber optic cable plant can be installed, construction may be needed to provide the infrastructure in which the fiber optic cables will be installed.



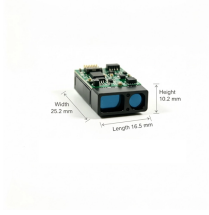
In the construction process of optical fiber communication engineering, it is necessary to pay attention to how to improve the construction technology of optical cable line, so as to...



Explore fiber optic cable design, transmission principles, and performance optimization techniques. Ideal for engineers designing high-reliability systems in aerospace, defense, and ...



The cable must not touch the tower structure at any point. For interior monopole installations, the cables can be freely hung down with adequate hoisting grips. Ade-quate fastening must be used at cable ...



Fiber optic cable sequential numbers are required at each pole location and vault wall. Sequential numbers will identify conduit length, and slack left in vaults and at poles.

Contact Us

For more information, pricing, or custom solutions, please contact us:

Website: <https://www.indzawo.co.za>

Email: sales@indzawo.co.za

Phone: +27 71 296 8473

Address: 22 Quantum Street, Midrand, 1685, Gauteng, South Africa

This document is for informational purposes only. Specifications subject to change without notice.

