

Connection of Distribution Network Automation Equipment Room



Connection of Distribution Network Automation Equipment Room



Figure 1 provides a block diagram of an electrical distribution system showing the name and the typical location of the electrical distribution equipment in a data center and the power flow path.



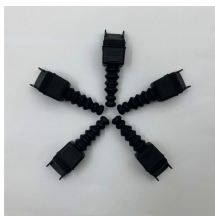
ElectraNet requires all Connection Applicants to consult with it concerning the design of the connection for its facility and the equipment selection for all protection functions which are required to coordinate ...



Cost-Effective and Scalable Connectivity:
Combines cellular networking with FlexVPN technologies to connect a growing number of Distribution Automation devices across the grid efficiently.



The illustrations are diagrams of DXR2 room automation stations in an installation box / panel, the connections to the field devices as well as bus connections (Ethernet, MS/TP, KNX, DALI)..



How do we organize/label/handle/process the data and commands? How are automation and protection applications implemented in these devices? What semantics and protocols do devices like IEDs and ...



The horizontal distribution area (HDA) is the space where the horizontal cross-connect resides. The HDA is the main transition point between backbone and horizontal cabling and houses ...



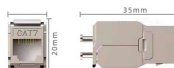
The document outlines considerations for electrical equipment room design, including definitions of key terms, power distribution configurations, transformer selection and installation, service entrance ...



A rack elevation diagram is a visual representation of the equipment and devices installed in a server rack, showcasing their placement and connectivity.



This article defines these key terms and provides an overview of the functions, placement, and standards for key electrical distribution equipment in data centers.



One bay unit includes circuit breaker, disconnector(s), measuring transformers and the local control and interface cabinet in one transportation unit. The unit has been factory-assembled and tested, offering ...

Contact Us

For more information, pricing, or custom solutions, please contact us:

Website: <https://www.indzawo.co.za>

Email: sales@indzawo.co.za

Phone: +27 71 296 8473

Address: 22 Quantum Street, Midrand, 1685, Gauteng, South Africa

This document is for informational purposes only. Specifications subject to change without notice.

