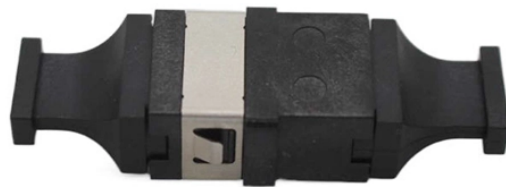


# Configuration of ENSP access layer switches and aggregation layer switches



## Configuration of ENSP access layer switches and aggregation layer



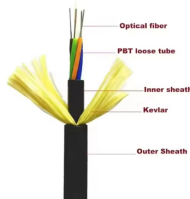
This user manual provides comprehensive information on using Huawei eNSP, a graphical network simulation tool. Learn how to simulate enterprise routers and switches, access the Huawei Technical ...



This chapter covers the design recommendations for a data center design deployment consisting of a Cisco Nexus® 7000 Series Switch at the aggregation layer and a Cisco Nexus 5000 Series Switch at ...



Network Design – Plan a hierarchical enterprise network (Core, Distribution, Access layers). Implementation in eNSP – Configure Huawei routers, switches, and security devices in a simulated ...



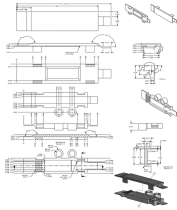
Link aggregation is mainly used to connect access layer switches and aggregation layer switches to greatly increase the transmission rate. Here I will briefly talk about the main function of aggregation, ...



This document provides summaries of commands for configuring routing, VLANs, ...



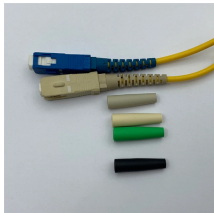
In addition, you can configure static management IP addresses for different aggregation and access switches to facilitate access to these switches during subsequent O& M and management.



Aggregation and layer two aggregation three-layer aggregation, aggregation between switches and switches, and aggregation between routers and routers. There are ...



Configure VLAN aggregation on SwitchA and SwitchB to implement Layer 2 isolation and Layer 3 connectivity of VLANs 101 to 180 and save IP addresses. Create an Eth-Trunk on SwitchA and ...



Ethernet link aggregation increases link bandwidth by bundling multiple physical links to form a logical link. Link aggregation can work in manual mode or Link Aggregation Control Protocol (LACP) mode. ...



Switch 1 and Switch 2 are interconnected through three Layer 3 Gigabit ports. The user wants to configure link aggregation between switch 1 and switch 2, to realize the intercommunication between ...



Link aggregation is mainly used to connect access layer switches and aggregation layer switches to greatly increase the transmission rate. Here I will briefly talk about the main function of aggregation, ...



With Huawei HCNA Configuration Labs page, you will learn all the required configuration practice on Huawei HCNA (HCIA) Routing and Switching. You can download the Lab files and then you can ...



This document provides summaries of commands for configuring routing, VLANs, link aggregation, and other features on Huawei networking devices.



Configuration notes: You cannot add a physical interface before configuring the aggregate link mode. You can configure the interface mode and related parameters only after adding the physical interface.

## Contact Us

For more information, pricing, or custom solutions, please contact us:

Website: <https://www.indzawo.co.za>

Email: [sales@indzawo.co.za](mailto:sales@indzawo.co.za)

Phone: +27 71 296 8473

Address: 22 Quantum Street, Midrand, 1685, Gauteng, South Africa

This document is for informational purposes only. Specifications subject to change without notice.

