

Complete Set of Distribution Box Quota Number



Overview

Quantity per Unit Pack (QUP) is the number of UIs bound or packaged in a unit pack. JUNON V12 series Distribution box, also known as assembly box, switch box and distribution board, is a complete set of equipment for centralized installation of switches, instruments, protective appliances and auxiliary equipment on the metal cabinet panel. Current and relevant previous year bulletins are organized below by year of issuance. gov. How to Set Up Quota Arrangement in SAP - A Step-by. Whether you're managing sales teams, production. They support various connectivity options, enhancing system efficiency and productivity with secure data and power transmission. If you need assistance with a task or if you are troubleshooting a problem, you might find the following articles helpful:. Each year the United States sets the Aggregate Production Quotas (APQ) for Schedule I and II controlled substances and the Annual Assessment of Needs (AAN) for the Combat Methamphetamine Epidemic Act (CMEA) List I chemicals — ephedrine, pseudoephedrine, and phenylpropanolamine — which determine the.

Complete Set of Distribution Box Quota Number



Find the Exchange Online limits for various service areas, including address book limits, mailbox storage limits, and reporting and message trace limits, to name just a few.



Registrants with new registrations or newly added drug codes may apply for quota at any time. Registrants may request adjustments to their current quotas at any time.



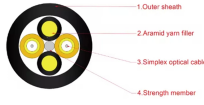
In this post, we'll explore a simple yet effective Quota Arrangement Process to help you distribute quotas logically and transparently. Pre-requisite Configuration:



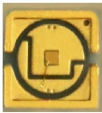
Our distribution boxes are perfect for industrial environments, catering to automation, robotics, and processing facilities. They provide cost-effective solutions through automated dispensing and ...



Shop ARB's range of robust and efficient distribution boards, ensuring reliable power distribution and safety in your electrical setups.



Quota rating is used to determine the amount of material that is to be assigned to particular source or vendor. The source with lowest quota rating represents the valid source.



JUNON V12 series Distribution box, also known as assembly box, switch box and distribution board, is a complete set of equipment for centralized installation of switches, instruments, protective appliances ...



The quota determines which portion of a total requirement over a period should be procured from the source in question. For example, suppose a quota arrangement contains two sources of supply and ...



Quantity per Unit Pack (QUP) is the number of UIs bound or packaged in a unit pack. The QUP is used on definitive units of issue and may represent an intermediate pack.



Quota information is issued for the trade community by the Quota and Agriculture Branch within the Office of Trade. The Quota Bulletins have replaced the previous Quota Book Transmittals.

Contact Us

For more information, pricing, or custom solutions, please contact us:

Website: <https://www.indzawo.co.za>

Email: sales@indzawo.co.za

Phone: +27 71 296 8473

Address: 22 Quantum Street, Midrand, 1685, Gauteng, South Africa

This document is for informational purposes only. Specifications subject to change without notice.

