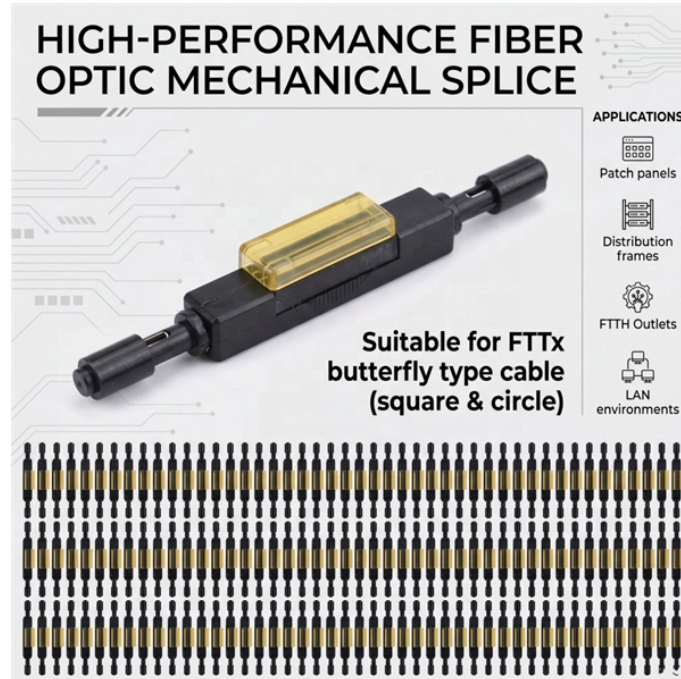


Cold-joints require a grinding machine



Overview

Roughening the existing concrete creates a mechanical key for the new concrete to grip onto. For larger areas, consider using a scarifier or diamond grinding machine. This Work consists of rehabilitating or replacing section(s) of cement concrete pavement in accordance with these Specifications and in conformity with the lines, grades, thicknesses, and typical cross-sections shown in the Plans or established by the Engineer. The delayed placement prevents full integration and knitting between the concrete batches and might lead to reduced structural robustness, increased. Cold jointing concrete is a technique used to connect two separate concrete pours that have not fully bonded together, often due to delays or interruptions in the pouring process.



Cold-joints require a grinding machine



Learn how to repair concrete cold joints effectively with our step-by-step guide. Master techniques for seamless, durable concrete repairs.



If you encounter a cold joint in a concrete structure, it's essential to address it promptly to prevent further deterioration and structural issues. Here are steps for repairing a concrete cold joint:



Discover the essential guide to understanding cold joints in concrete footings and their impact on structural integrity. This article explores the causes, consequences, and best practices for preventing ...



If the cold joint is formed in an area where the tensile stresses are applied, it is required careful examination of the joint to avoid structural failures. The formation of cracks, separations, etc., could ...



The equipment for grinding cement concrete pavement shall use diamond embedded saw blades gang mounted on a self propelled machine that is specifically designed to smooth and texture concrete ...



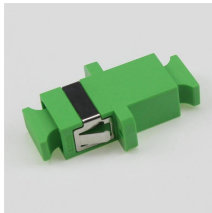
Back gouging is the removal of weld and base metal by arc gouging or grinding from the other side of a partially welded joint to ensure complete fusion and penetration upon subsequent welding from that ...



The cold concrete joints are considered weak joints but the cold concrete joints are not always weak. For this, it is necessary to provide the extra length of steel reinforcement in the ...



ACI 318 and ACI 530.1 are clear that, for all construction joints consisting of fresh concrete or masonry placed against the hardened material, the laitance is required to be removed and the surface must ...



What is a Cold Joint in Concrete? Cold joints occur when a fresh concrete batch is poured against a partially hardened existing layer. As you know, concrete hardens through chemical reactions ...



Question: When should saw cuts be made on a concrete slab?



The milling process involves grinding the asphalt into small aggregate using specialized equipment called milling machines or cold planners. One thing you should note about these ...

Contact Us

For more information, pricing, or custom solutions, please contact us:

Website: <https://www.indzawo.co.za>

Email: sales@indzawo.co.za

Phone: +27 71 296 8473

Address: 22 Quantum Street, Midrand, 1685, Gauteng, South Africa

This document is for informational purposes only. Specifications subject to change without notice.

