

Charging Pile Distribution Box Installation in Andorra



Overview

View the TI AC charging (pile) station block diagram, product recommendations, reference designs and start designing. Charging pile installation and main matters - Bluesky is a provider of integrated energy refueling solutions for petrol, natural gas, hydrogen, and EV charging. The installation of charging piles is very important. Below, I will introduce to you what you should pay attention to when installing. Ready to help build a more sustainable future?

Installers and electricians can find our chargers, as well as expert guidance and support, at any of the leading EV charger suppliers below. Not sure where to begin?

Let us connect you with the right supplier partner! Get in charge. Specific requirements for safety and design are provided in IEC 60364 Low-voltage electrical installations – Part 7-722: Requirements for special installations or locations – Supplies. The charging pile box substation is the power distribution part of the entire charging station system.

Charging Pile Distribution Box Installation in Andorra



Adapting to the harsh working conditions of outdoor EV charging piles, balancing waterproof, overload protection and anti-aging, ensuring charging safety and equipment service life.



Adapting to the harsh working conditions of outdoor EV charging piles, balancing waterproof, overload protection and anti-aging, ensuring charging safety and ...



As the title suggests, our market trader pillars are ideal for installation at weekly market sites or in any other situation that requires temporary electrical supply.



Find top EV charger suppliers and expert installation support. Explore our network of Wallbox partners for reliable EV charging solutions.



The charging pile box substation is the power distribution part of the entire charging station system. Its box substation is manufactured and assembled by a special complete set manufacturer according to ...



View the TI AC charging (pile) station block diagram, product recommendations, reference designs and start designing.



The main criteria to compare these two solutions are the potential impact on other RCDs in the electrical installation (risk of blinding), and the expected continuity of service of EV charging, as ...



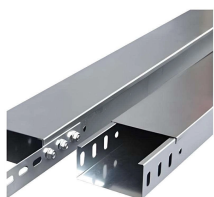
If the EV charging park needs expansion it is easy to add extra incoming and outgoing power cables to the distribution board. The system is designed and approved for outdoor installation with proven long ...



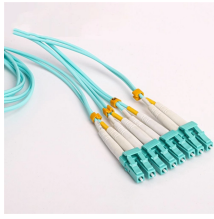
The charging pile box substation is the power distribution part of the entire charging station system. Its box substation is manufactured and assembled by a special ...



The input end of the charging pile is directly connected to the AC grid, and the output end is equipped with a charging plug for charging the electric vehicle. Charging piles generally provide ...



Chance EV charger foundations are a single-piece, hollow steel helical pile pipe with a sturdy baseplate welded to the top. The easy-to-install foundation system can be screwed into the ground in limited ...



Plan the installation location of charging equipment. It is recommended to install it near the power distribution room. A distance of at least 1 meter should be left in front and behind the charging pile to ...

Contact Us

For more information, pricing, or custom solutions, please contact us:

Website: <https://www.indzawo.co.za>

Email: sales@indzawo.co.za

Phone: +27 71 296 8473

Address: 22 Quantum Street, Midrand, 1685, Gauteng, South Africa

This document is for informational purposes only. Specifications subject to change without notice.

