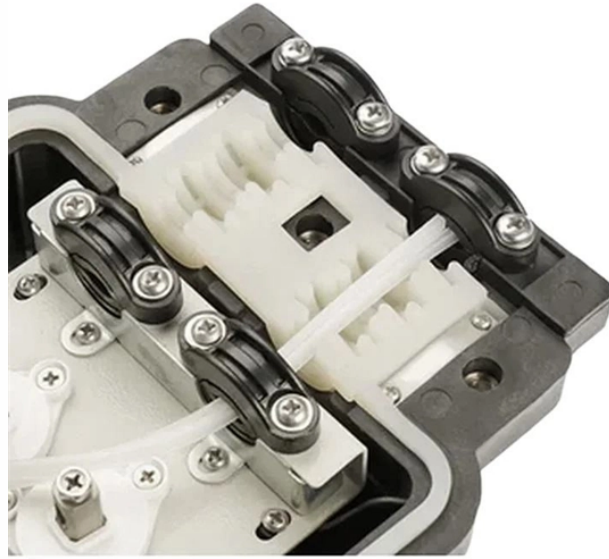


Central Asian countries OLT optical line terminal LPO



Overview

Future-ready Optical Line Terminals (OLTs) supporting next-generation PON technologies XGS-PON, NG-PON2, and 25G/50G-PON. Save your investments and achieve a smooth technology migration by delivering more than one technology within the same line card. In modern communication networks, optical line terminal (OLT) is the core device to realize point-to-multipoint (P2MP) in passive optical network (PON) architecture. Modern OLTs offer communication service providers (CSP) the ability to launch multigigabit services to tens of thousands of subscribers from a single location or just ten.



Central Asian countries OLT optical line terminal LPO



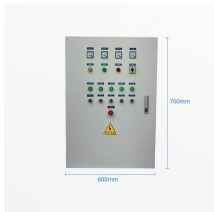
The guide demystify what an OLT is, how it operates, the different technologies and the knowledge for configuration, and compatibility.



Our Optical Line Terminal (OLT) equipment is one of today's most suitable and scalable solutions, offering Network Operators and Service Providers a flexible, customizable, and cost-effective ...



Our silicon devices have been interoperability-tested, field-proven and adopted by various worldwide operators and carriers. With advanced traffic management, the innovative architecture allows ...



Explore the different classifications of OLT equipment, understanding each type's unique functions and applications. Read this article to find the best ...



Our SDX 6000 Series of software-defined optical line terminals (OLTs) consists of open and disaggregated access devices that support a broad range of PON standards, including 10G Combo ...



An optical line termination (OLT), also called an optical line terminal, is a device which serves as the service provider endpoint of a passive optical network.



The South Korea Optical Line Terminal (OLT) Equipment market is undergoing rapid transformation, driven by technological innovation, shifting consumer behaviors, and supportive ...



The Optical Line Terminal (OLT) is the backbone of every PON-based broadband network — managing, scheduling, and securing optical data transmission across thousands of connections.



The heart of any PON system is the optical line terminal (OLT). Think of the OLT as the brain of the network; it is the concentration point for upstream and downstream traffic.



What is Optical Line Terminal (OLT)? An optical line terminal (OLT) is hardware that is used at the endpoint of the passive optical network. In this article, we will discuss Optical Line Terminal (OLT), its ...



Explore the different classifications of OLT equipment, understanding each type's unique functions and applications. Read this article to find the best solution for your network needs.

Contact Us

For more information, pricing, or custom solutions, please contact us:

Website: <https://www.indzawo.co.za>

Email: sales@indzawo.co.za

Phone: +27 71 296 8473

Address: 22 Quantum Street, Midrand, 1685, Gauteng, South Africa

This document is for informational purposes only. Specifications subject to change without notice.

