

## Celectrode wiring in the distribution box



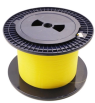
### Overview

This video shows real on-site footage of electrical installation, demonstrating safe and standardized wiring methods used by professionals. Let's begin with InterNACHI's Home Inspection Standards of Practice. Home Inspection. Grounding is the act of connecting your electrical system to the earth itself, typically via a metal ground rod. The primary purposes of grounding are to stabilize the system's voltage during normal operation and to provide a path for high-voltage events like lightning strikes or line surges to be. This publication gives you general guidelines for installing an Allen-Bradley industrial automation system that may include programmable controllers, industrial computers, operator-interface terminals, display devices, and communication networks. control work practices involving temporary wiring. A safe, efficient temporary wiring system protects the client, the employer and the em-ployee by minimizing ser ous injuries, fires, pow-er failures and downtime. The recommended procedures in this data sheet are intended to eliminate the unsafe.

## Celectrode wiring in the distribution box



The grounding-electrode system is at earth-ground potential and is the central ground for all electrical equipment and ac power within any facility. Use 8 AWG copper wire minimum for the grounding ...



The MBJ connects the service neutral wiring to the grounding electrode conductor (GEC) and also to the service panelboard cabinet. The MBJ is a reliable conductor that ensures the electrical conductivity ...



A comprehensive guide on properly grounding an electrical panel according to NEC Article 250. Learn the difference between grounding and bonding, electrode types, and safety steps.



Learn how to wire a distribution box step by step! This video shows real on-site footage of electrical installation, demonstrating safe and standardized wiring methods used by professionals.



In electrical engineering, the spacing of electrodes is based on the Sphere of Influence theory. A good rule of thumb is to space the electrodes 2 times (2X) the length of the electrode. Therefore, you ...



A separate flexible wire or strap forming part of the equipment, insulated or bare, attached to an equipment grounding conductor and protected against physical damage.



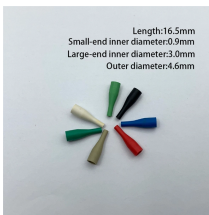
Wiring Direction: Wiring between the main circuit breaker and each branch circuit breaker in the box generally goes on the left, and the wiring out of the distribution box generally goes on the ...



Table 250.66 of the NEC is used to size grounding electrode conductors for alternating-current systems located at the service, at each building or structure where supplied by a feeder(s) or branch circuit(s), ...



work requires electrical power for many purposes. However, exposure to weather, frequent relocation, rough use and other conditions not normally encountered with conventional wiring systems ...



Find out how to properly wire an electrical panel box with a comprehensive diagram and step-by-step instructions.

## Contact Us

For more information, pricing, or custom solutions, please contact us:

Website: <https://www.indzawo.co.za>

Email: [sales@indzawo.co.za](mailto:sales@indzawo.co.za)

Phone: +27 71 296 8473

Address: 22 Quantum Street, Midrand, 1685, Gauteng, South Africa

This document is for informational purposes only. Specifications subject to change without notice.

