

Can optical modules be paired arbitrarily



Overview

During transport and transfer before use, optical modules must remain in their ESD-protective packaging and must not be removed or placed arbitrarily. When it comes to the connection between two optical modules, the following four factors should be considered: wavelength, speed, fiber type, and connection to the switch. First requirement: Identical Wavelength. Identical Wavelength Transceivers must support the same wavelength at both ends to transmit data effectively.



Can optical modules be paired arbitrarily



Although an SFP+ module can be plugged into an SFP port, the transmission speed will be limited to 1 Gbps. In contrast, an SFP module will not connect when inserted into an SFP+ port. ...



This lack of clarity can be problematic when devices from one vendor don't communicate with the SFP modules from another. Compatible SFPs, provided they align with MSA standards, serve the same ...



Learn how to choose the right SFP module for your network and avoid common compatibility mistakes. This practical guide explains SR vs LR, singlemode vs multimode, ...



Will the modules be compatible and operate flawlessly on my switches? This article will lead you to figure out the interoperability and compatibility nature of the optical transceivers.



Q: Can 1G SFP optical modules and 10G SFP+ optical modules be used simultaneously? A: Under the premise that they all share the same specifications (such as speed and wavelength) and choose the ...



Optical transceivers are the unsung heroes of modern connectivity, powering everything from cloud data centers to enterprise networks. Yet, selecting and managing them can be a complex ...



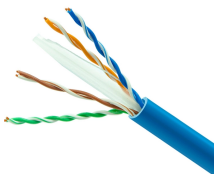
During transport and transfer before use, optical modules must remain in their ESD-protective packaging and must not be removed or placed arbitrarily. Before touching an optical module, it is mandatory to ...



Optical modules with the same standards can interoperate with each other. The standards define the rate, wavelength, and transmission distance of optical modules, but not their encapsulation modes ...



Q: Can two optical transceivers from different brands connect with each other? A: Yes, if they share the same wavelength, speed, and fiber type, and operate normally on their respective ...



Optical module interconnection is not simply about plugging in, but about a comprehensive understanding of communication standards, link performance, and device compatibility.

Contact Us

For more information, pricing, or custom solutions, please contact us:

Website: <https://www.indzawo.co.za>

Email: sales@indzawo.co.za

Phone: +27 71 296 8473

Address: 22 Quantum Street, Midrand, 1685, Gauteng, South Africa

This document is for informational purposes only. Specifications subject to change without notice.

