

Can indoor fiber optic cables be used in outdoor cable trays



Overview

An indoor-outdoor fiber optic cable is a hybrid design suitable for both building interiors and outdoor pathways. They can be installed directly in ducts, trays, or risers, minimizing the need for transitions between different cable types. This dual-purpose design. Indoor/Outdoor applications involves manufacturing a jacket material constructed with the appropriate combination of moisture, mechanical, flame, chemical and UV protection for the outdoor environment, but with a proper flame rating for the indoor environment. Below are the key factors to take into. Can outdoor cable be used inside buildings?

Only if it has proper indoor fire rating. Indoor cables can be installed in raceways, cable trays above ceilings or under. This guide offers a technical comparison of outdoor and indoor fiber optic cables, exploring their construction, performance metrics, applications, and installation challenges. Designed for professionals sourcing solutions from CommMesh, it provides actionable insights to optimize network.

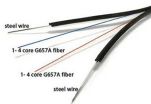
Can indoor fiber optic cables be used in outdoor cable trays



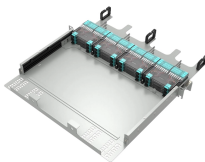
Cable assemblies installed in outdoor and indoor/outdoor environments must be properly selected to insure a durable, long-lasting connection. Learn below how to select a cable structure ...



Selecting the right fiber optic cable for indoor or outdoor use is a critical decision that impacts your network's performance, durability, and compliance with safety regulations.



This guide explores different types of fiber optic cable, including indoor fiber optic cable and outdoor fiber optic cable, and outlines best practices ...



This guide offers a technical comparison of outdoor and indoor fiber optic cables, exploring their construction, performance metrics, applications, and ...



This guide explores different types of fiber optic cable, including indoor fiber optic cable and outdoor fiber optic cable, and outlines best practices for installation in different settings.



Perfect for remotely powered Passive Optical LAN installations, security cameras, and wireless access points, the Slimline Hybrid Powered Fiber Cable offers the convenience of remote power and the ...



Perfect for remotely powered Passive Optical LAN installations, security cameras, and wireless access points, the Slimline Hybrid Powered Fiber Cable offers the ...



The Legrand Indoor/Outdoor fibre optic cable is easy to handle and resilient to hardships. It can be used for LAN and WAN backbones. It is equally suited for ...



Learn the engineering differences between indoor and outdoor fiber cables, including jacket materials, fire rating, tensile strength, and application use.



Fiber optic cable may be installed indoors or outdoors using several different installation processes. Outdoor cable may be direct buried, pulled or blown into conduit or innerduct, or installed aerially ...



Can I use an indoor fiber optic cable outside? No, indoor cables lack protective jackets against moisture and UV radiation, making them unsuitable for outdoor use.



The Legrand Indoor/Outdoor fibre optic cable is easy to handle and resilient to hardships. It can be used for LAN and WAN backbones. It is equally suited for installation in ducts and on trays. It has an ...



This guide offers a technical comparison of outdoor and indoor fiber optic cables, exploring their construction, performance metrics, applications, and installation challenges.



Our indoor/outdoor fiber optic cables combine the flexibility required for internal routing with the ruggedness necessary for external environments. They can be installed directly in ducts, trays, or ...

Contact Us

For more information, pricing, or custom solutions, please contact us:

Website: <https://www.indzawo.co.za>

Email: sales@indzawo.co.za

Phone: +27 71 296 8473

Address: 22 Quantum Street, Midrand, 1685, Gauteng, South Africa

This document is for informational purposes only. Specifications subject to change without notice.

