

## Can a single-mode single-fiber transmission be bidirectional



### Overview

Yes, single-mode fiber can support full-duplex communication. Full-duplex communication means data can be transmitted and received simultaneously in both directions over a single fiber optic cable. Simple design and low requirements. There are two ways to achieve this. In typical fiber-optic networks, two fiber strands. However, recently I have encountered several devices that utilize a single fiber while providing bidirectional communication. An example is this device which provides two zero-latency analog audio channels plus a 10/100 Ethernet port over. In practice, single-mode BiDi transceivers are particularly useful when fiber optic infrastructure is limited or cable capacity needs to be used efficiently, for example for networking data centers, metropolitan area networks (MAN), or fiber optic Internet connections such as FTTH/FFTO.

## Can a single-mode single-fiber transmission be bidirectional



In the case of single-mode fiber, a single strand of fiber can be used for bi-directional transmission by using different wavelengths for the transmit and receive directions, which are ...



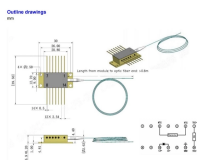
The use of can to ask or grant permission has been common since the 19th century and is well established, although some feel may is more appropriate in formal contexts. May is relatively rare in ...



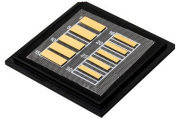
BiDi transceivers are designed to enable simultaneous bidirectional data transmission over a single strand of single-mode fiber (SMF). This is achieved using wavelength division ...



However, recently I have encountered several devices that utilize a ...



A bidirectional SFP (BiDi SFP) is an optical transceiver designed to transmit and receive data over a single strand of single-mode fiber. Instead of using two separate fibers for transmit and receive ...



Can is usually used in standard spoken English when asking for permission. It is acceptable in most forms of written English, although in very formal writing, such as official instructions, may is often ...



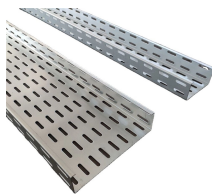
Learn about trail conditions and closures, the weather forecast, and drinking water availability inside the canyon. What's Open Today? Here's an updated list of South Rim hours of operation for visitor ...



Bidirectional (BiDi) transceivers represent a transformative technology that enables full-duplex communication over a single optical fiber strand by using different wavelengths for transmit ...



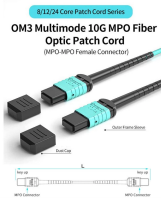
However, recently I have encountered several devices that utilize a single fiber while providing bidirectional communication. These devices are present in telephone and intercom systems.



CAN definition: to be able to; have the ability, power, or skill to. See examples of can used in a sentence.



For bidirectional data transmission via single-mode fiber optics, the specific properties for separating transmission and reception are used, i.e., the optical windows at 1270 nm and...



Can is the most used modal verb in English, yet most English learners don't still know all its usages and when not to use it. This detailed post explains everything about the modal can.



The ability to utilize a single fiber for bidirectional communication is a key advantage of BiDi transceivers, making them an essential component in modern optical networks.



A bidirectional SFP (BiDi SFP) is an optical transceiver designed to transmit and receive data over a single strand of single-mode fiber. Instead of using two separate fibers for transmit and receive ...



Bidirectional traffic on a single fiber, commonly referred to as BiDi, is a technology that enables data transmission in both directions using a single fiber optic cable.



BiDi modules provide similar latency and throughput, as the format supports bidirectional data flow at the same time, with a single fiber, without sacrificing speed in either direction.



BiDi modules provide similar latency and throughput, as the format supports bidirectional data flow at the same time, with a single fiber, without ...



Canva is a free-to-use online graphic design tool. Use it to create social media posts, presentations, posters, videos, logos and more.



Used to indicate possession of a specified power, right, or privilege. The president can veto congressional bills.



You use can to indicate that someone has the ability or opportunity to do something. Don't worry yourself about me, I can take care of myself. I can't give you details because I don't actually have any details. ...



Single-Fiber Bidirectional Transmission In this mode, multi-wavelength optical signals are transmitted through only one fiber in both receive and transmit directions. This mode is mainly used on the client ...



Do you use “can” and “could” correctly in English? Join me and learn how to use these two important modal verbs, in terms of grammar, vocabulary, and pronunciation.



BiDi transceivers are designed to enable simultaneous bidirectional data transmission over a single strand of single-mode fiber (SMF). This is ...

## Contact Us

For more information, pricing, or custom solutions, please contact us:

Website: <https://www.indzawo.co.za>

Email: [sales@indzawo.co.za](mailto:sales@indzawo.co.za)

Phone: +27 71 296 8473

Address: 22 Quantum Street, Midrand, 1685, Gauteng, South Africa

This document is for informational purposes only. Specifications subject to change without notice.

