

Can a single cable be laid in a cable tray



Overview

Due to their exposure to the open air because of the cable trays, the wires contained within need a very durable outer covering. The regulations dictate that the cables must either be Type TC (also known as Tray Rated) or must be metal-armored (Type MC). Channel tray is a small, single-channel raceway typically 3 to 4 inches wide. Fill and ampacity rules are more restrictive than larger tray types. Wire mesh tray (basket tray) is a lightweight, flexible tray made of welded. The primary rulebook used in the safe use of cable trays is NEC Article 392. This is a description of how to select, install, and support these metal or plastic frames, on which electrical wires are installed. You should consider it as a series of instructions that make the buildings resistant to. Installation of Cable in Cable Trays involves precise routing on support systems, NEC/IEC compliance, grounding, ampacity derating, bend radius control, segregation of services, fire safety, labeling, and reliable cable management for industrial and commercial facilities. This guide walks you through.

Can a single cable be laid in a cable tray



Cables rated 600 volts or less can be installed together in the same cable tray without additional separation, provided they meet the NEC requirements for fill and support .



For cables larger than 4/0 AWG, cables are installed in a single layer (no stacking) and the sum of cable diameters must not exceed the tray width. For cables 4/0 AWG and smaller, the ...



(1) All single conductors shall be installed in a single layer. (2) Conductors that are bound together to comprise each circuit pair shall be permitted to be installed in other than a single layer. (3) The sum ...



When you're installing single-conductor cables in a ladder-type cable tray, and you're mixing large conductors (≥ 1000 kcmil) with smaller ones (< 1000 kcmil), the National Electrical Code ...



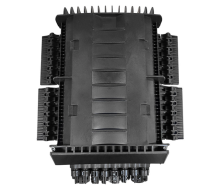
It provides rules for acceptable wiring methods that can be ...



Single-conductor cables and insulated conductors can be installed following specific guidelines. They must be 1/0 AWG or larger and appropriately marked for cable tray use.



Can any cable be used in a tray? The short answer is no. Due to their exposure to the open air because of the cable trays, the wires contained within need a very durable outer covering.



Cable tray layout must take into consideration the design limits of the cable. To minimize damage and verify integrity after installation, follow the practices outlined in cable handling and testing procedures ...



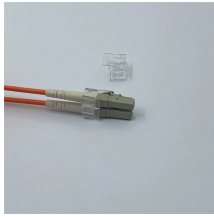
When you're installing single-conductor cables in a ladder-type cable tray, and you're mixing large conductors (≥ 1000 kcmil) with smaller ones (< 1000 ...



Anixter has produced a helpful article regarding single-conductor cables permitted in cable tray applications: "Article 392 of the NEC provides the basic requirements for installations ...



This article explains the main requirements and good practices for cable tray systems, including tray types, materials, loading, supports, bonding, cable selection, and installation details.



It provides rules for acceptable wiring methods that can be installed in cable trays, including conditions for use. It addresses uses permitted and not permitted for cable trays.

Contact Us

For more information, pricing, or custom solutions, please contact us:

Website: <https://www.indzawo.co.za>

Email: sales@indzawo.co.za

Phone: +27 71 296 8473

Address: 22 Quantum Street, Midrand, 1685, Gauteng, South Africa

This document is for informational purposes only. Specifications subject to change without notice.

