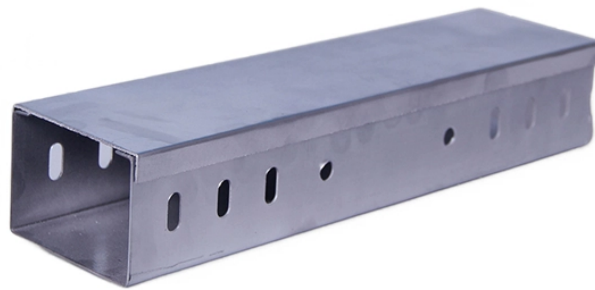


Can 10 kV power lines be run through cable trays

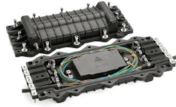


Overview

Due to their exposure to the open air because of the cable trays, the wires contained within need a very durable outer covering. The regulations dictate that the cables must either be Type TC (also known as Tray Rated) or must be metal-armored (Type MC). Cable tray is the preferred wiring method for industrial facilities, data centers, and large commercial buildings where routing dozens or hundreds of cables through individual conduits would be impractical and expensive. This is a description of how to select, install, and support these metal or plastic frames, on which electrical wires are installed. Here is the summary of the main points found in NEC Article. Question 1: Can mechanical utility piping or tubing containing water or compressed air be installed in cable trays with electrical cables?

Answer: No.

Can 10 kV power lines be run through cable trays



Fiber optic communication cables are immune to EMI and can be installed in power cable trays without separation concerns. This is one reason fiber is increasingly preferred for industrial ...



Our wind certification report provides you with list of acceptable B-Line series cable tray supports, fittings and covers based off of the environmental conditions, cable loading, and type of cable tray in your ...



It provides rules for acceptable wiring methods that can be ...



Can any cable be used in a tray? The short answer is no. Due to their exposure to the open air because of the cable trays, the wires contained within need a very durable outer covering.



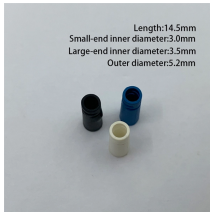
Historically, the NEC has allowed cable trays, but has lacked specific guidelines for sizing conductors and using smaller conductors like PV wire and DG cable on rooftops. The 2023 update ...



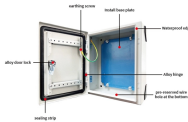
Explore the factors affecting cable ampacity in trays, including thermal and electromagnetic effects. Learn calculation methods and best practices for safe installations.



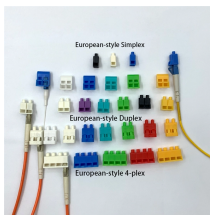
This article explains the main requirements and good practices for cable tray systems, including tray types, materials, loading, supports, bonding, cable selection, and installation details.



Cables and conductors must be secured to the cable tray at intervals according to installation instructions. For non-horizontal runs, cables should be fastened securely to transverse ...



Question 1: Can mechanical utility piping or tubing containing water or compressed air be installed in cable trays with electrical cables? Answer: No. Cable trays are a support system for electrical cables, ...



The baseline rule is straightforward: Type TC cable can be used for power, lighting, control, and signal circuits in cable trays (including trays with mechanically discontinuous segments ...



It provides rules for acceptable wiring methods that can be installed in cable trays, including conditions for use. It addresses uses permitted and not permitted for cable trays.

Contact Us

For more information, pricing, or custom solutions, please contact us:

Website: <https://www.indzawo.co.za>

Email: sales@indzawo.co.za

Phone: +27 71 296 8473

Address: 22 Quantum Street, Midrand, 1685, Gauteng, South Africa

This document is for informational purposes only. Specifications subject to change without notice.

