

## Cable tray turns downward



### Overview

Cable sag results from incorrect spacing of cable tray supports or from employing the incorrect tray type that is, light-duty perforated trays in high-load applications. Complicating the problem are overloaded trays and large unsupported spans. Sagging causes tension at. Cable tray failures can cause operational disruptions, equipment damage, and safety risks. This guide discusses common cable tray problems, from loosening and corrosion to grounding issues and installation errors, along. We have a lot of Panduit cable management and are planning to install cable tray as part of a remodeling project. It is really important in: Despite these benefits, cable management is sometimes disregarded during design or installation stages, which results in many issues that could have been readily prevented with suitable. 4 Turn tray open-side down and cut wires from bottom of tray. Cut wires with B-Line Angular Bolt Cutter, bend to create a bend, tee, or reducer. However, improper installation.

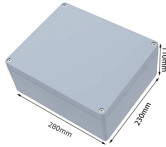
## Cable tray turns downward



This comprehensive guide investigates the most frequent wire management challenges faced in real-world setups and demonstrates how the correct cable tray accessories may address them.



These are 3 piece splices that utilize bolt and nut to securely attach and bond tray sections. The Double Splice cuts the required number of splice hardware down to a minimal number versus traditional ...



I've seen tray installed upside down but never used upside down. ...



I've seen tray installed upside down but never used upside down. You may see a random cable here and there tied to the bottom side but this is just wrong on every level.



For engineers, contractors and facility managers, understanding common problems in steel cable tray installations – and knowing how to avoid ...



Hubbell's NEXTFRAME® Ladder Tray is the effective and widely used cable runway that supports and delivers bundles of cable between cabinets, racks, and closets, along walls, and suspended from ...



However, like any other infrastructure, cable trays are prone to failures that can result in serious safety hazards, financial losses, and downtime. In this article, we will discuss the two basic ...



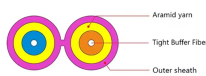
Learn about common cable tray failures, their causes, and practical solutions for ensuring the longevity and safety of your cable tray system, including corrosion, cracks, and grounding issues, ...



For engineers, contractors and facility managers, understanding common problems in steel cable tray installations – and knowing how to avoid them – is essential for ensuring system ...



Here we introduce various types of faults that may occur in cable trays and their solutions in details, hoping we can help you in some way.



4 Turn tray open-side down and cut wires from bottom of tray. Completely adaptable, B-Line Flextray is designed to accommodate jobsite changes. Cut wires with B-Line Angular Bolt Cutter, bend to create ...



Those cable trays are indeed designed to be installed “upside-down”. The “sidewalls” of the Wyr-Grid aren't really high enough to hold a significant number of cables anyways.

## Contact Us

For more information, pricing, or custom solutions, please contact us:

Website: <https://www.indzawo.co.za>

Email: [sales@indzawo.co.za](mailto:sales@indzawo.co.za)

Phone: +27 71 296 8473

Address: 22 Quantum Street, Midrand, 1685, Gauteng, South Africa

This document is for informational purposes only. Specifications subject to change without notice.

