

Cable tray pointing upwards at a right angle



Cable tray pointing upwards at a right angle



By applying the following formula you can quickly find the size of cut out section that you need to cut out of the side of the cable tray, or gutter-type ...



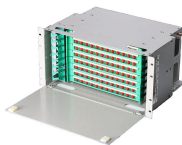
Installing cable tray support brackets at an angle can offer benefits such as enhanced load distribution, increased cable management space, and improved aesthetics.



This document provides installation guidelines for cable trays, including: 1) Cable trays come in perforated and ladder types, with perforated trays made of steel sheets and ladder trays made of ...



Hubbell's NEXTFRAME® Ladder Tray is the effective and widely used cable runway that supports and delivers bundles of cable between cabinets, racks, and closets, along walls, and suspended from ...



Do not allow the cables to drop in the cable tray as this may damage the cable and/or the cable tray. If cable connections will not be made immediately, the pulling eye or basket grip should be removed ...



Does anyone know how to place cable tray on a wall so that the open end of the tray is facing into the room? I have tried inserting a fitting first, rotating that so it is facing the right way and ...



The problem comes when creating the cable trays in different planes, because then the cable trays are not oriented appropriately well by default by the creation methods, and there is no way to specify ...



This guide covers the critical steps, from selecting the right electrical cable tray and performing accurate cable fill calculations to managing a safe cable pull through and ensuring all bonding and grounding ...



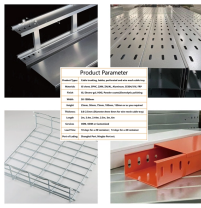
Where metal supports for metal cable trays are bolted to the tray and are in good electrical contact with the grounded structural metal frame of a building, the tray shall be deemed to be bonded to ground.



Any vertically orientated component, whether cable ladder, cable tray or support, acts structurally as a column; it is not usual to consider cable ladder or cable tray in this way because they are not ...



Attach one bracket to each of the two 90° angles using two bracket clamps (see page C35) per angle. To form a horizontal cross without a radius, proceed in the same way as a tee, repeating the process on ...



To install the cable tray supports, first find the required elevation from the floor to the bottom of the cable tray and establish a level line with a laser or a nylon string.

Contact Us

For more information, pricing, or custom solutions, please contact us:

Website: <https://www.indzawo.co.za>

Email: sales@indzawo.co.za

Phone: +27 71 296 8473

Address: 22 Quantum Street, Midrand, 1685, Gauteng, South Africa

This document is for informational purposes only. Specifications subject to change without notice.

