

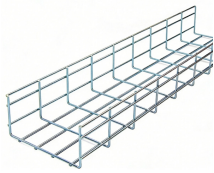
# Cable tray optical cable laying method



## Overview

In fact, there are two methods for aerial optical cables laying: one is "fixed-pulley traction method", including "manual traction method" and "mechanical traction method"; the other is "cable tray moving and releasing method". But before you lay the first tray or clamp down a single cable, you need a solid plan. This guide breaks down the process step by step. Mark the cable tray route based on your electrical cable tray design and site. According to the 2014 National Electric Code® (NEC), any listed optical fiber cable is acceptable for a tray application. The shipments will be hand unloaded or by using forklift. mm, single stranded,armoured control cable laying. - Supply of (1) HV Terminal Kit (2) 2. Cable Tray Support. Cable tray cable installation generally follows these steps: □□ This checklist covers the core process used in most projects.

## Cable tray optical cable laying method



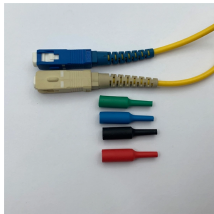
While there are several specific types of listings for power cables, specifically for tray applications, there is no equivalent tray rating for optical fiber cables. According to the 2014 National Electric Code® ...



The choice of method should be discussed with a local inspector. The best decision may be to extend only the cables, creating a discontinuity in the cable tray.



The bending radius of optical cable during laying process should be effectively guaranteed to avoid “gold hooks” and avoid too much tension, abrasion and too many times of twists and turns.



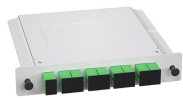
Learn everything about cable tray installation with our complete guide. Discover types, steps, and safety tips for efficient electrical cable management.



Learn the best practices for installing cables in trays. This guide covers essential steps, technical requirements, and key details for efficient cable tray installation.



The purpose of this article is to define the sequence and methodology for the installation of electrical cable trays, cable trunking, cable raceways and boxes, junction and pull boxes.



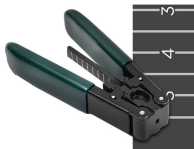
This document outlines the method statement for installing cable trays, ladders, and perforated types. It details the resources, safety measures, and step-by-step process for installation.



- Dressing the HDPE conduit (Cables inserted) along the length in cable tray by suitable size clamping in the tray and on the wall ~1 M (one meter) intervals. - Again test the optical cable after laying by ...



Step-by-step cable tray and conduit installation method with safety, quality and inspection procedures as per IEEE standards.



Efficient cable tray installation and proper cable handling are critical for ensuring the reliability and safety of electrical systems. Adherence to these guidelines is essential: Cable Tray Installation Method ...



This method statement covers the site installation of the cable tray & ladders and the requirements of checks to be carried out.

## Contact Us

For more information, pricing, or custom solutions, please contact us:

Website: <https://www.indzawo.co.za>

Email: [sales@indzawo.co.za](mailto:sales@indzawo.co.za)

Phone: +27 71 296 8473

Address: 22 Quantum Street, Midrand, 1685, Gauteng, South Africa

This document is for informational purposes only. Specifications subject to change without notice.

