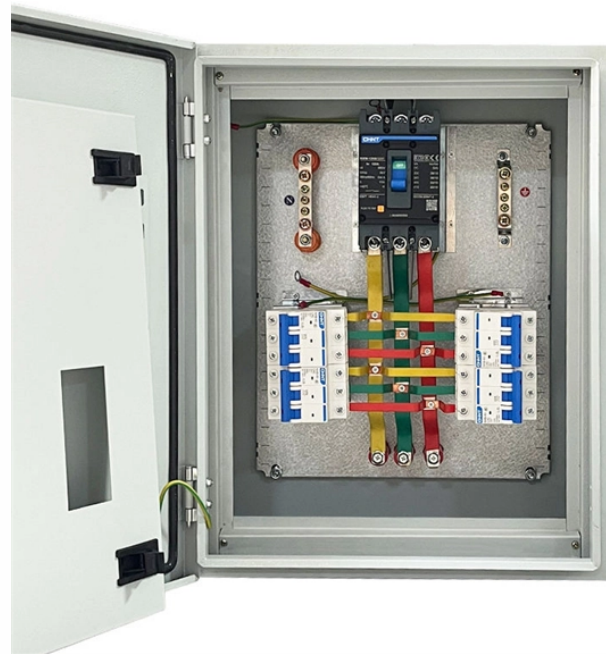


Cable tray installation in brand factory buildings



Overview

From material selection to mounting techniques, routing strategies, and best practices — this walkthrough gives you a real-world look at how we execute efficient, safe, and scalable cable tray systems in industrial environments. □□

What You'll Learn: □ Importance of cable. Whether you're building a commercial setup or upgrading an industrial plant, proper cable tray installation ensures neat wiring, safe access, and easy maintenance. But before you lay the first tray or clamp down a single cable, you need a solid plan. This guide breaks down the process step by step. These systems provide an efficient and adaptable solution for managing a wide range of cables, including power cables, control. en completely installed, without damage either to conductors or structural system use maintain spacing or to keep cables in place when the tray is ect the minimum bend ra-dius for cables as they exit the bottom of the cable tray. A rung spacing of 6 to 9 inches (150 to 230 mm) is preferable when. Cable tray (or cable ladder) systems are a popular alternative to electrical conduit systems, as they have an outstanding record for dependable service, design flexibility and cost savings in commercial and industrial applications. A properly designed and installed

cable tray system will provide. This method statement describes a detailed procedure for properly installing cable trays and conduits for the Feeder System. The objective is to ensure safety, quality and compliance during the.

Cable tray installation in brand factory buildings



It describes inspecting and storing cable trays upon receipt, installing trays flat or vertically, fixing trays to structures, designing trays to carry loads, providing ...



In this video, watch a complete Electrical Cable Tray Installation process inside a factory setup.



Hubbell's NEXTFRAME® Ladder Tray is the effective and widely used cable runway that supports and delivers bundles of cable between cabinets, racks, and closets, along walls, and suspended from ...



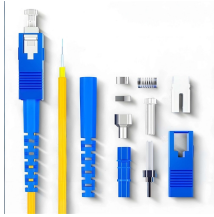
Whether you're building a commercial setup or upgrading an industrial plant, proper cable tray installation ensures neat wiring, safe access, and easy maintenance. But before you lay the first tray ...



Our wind certification report provides you with list of acceptable B-Line series cable tray supports, fittings and covers based off of the environmental conditions, cable loading, and type of cable tray in your ...



Cable tray installation must comply with specific technical standards to ensure electrical safety, system reliability, and long-term maintainability. This document outlines the key requirements for cable tray ...



Learn how to install cable trays for large-scale projects with our professional, step-by-step guide covering industry standards, safety protocols, ...



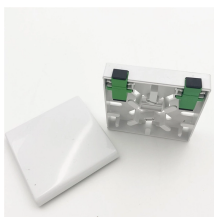
This article explains the main requirements and good practices for cable tray systems, including tray types, materials, loading, supports, bonding, cable selection, and installation details.



ShowMeCables delivers reliable, code-compliant cable management solutions built to meet NEC Article 392 standards. We support the use of approved tray-rated cables, proper tray fill ...



ShowMeCables delivers reliable, code-compliant cable management solutions built to meet NEC Article 392 standards. We support the use of approved tray-rated cables, proper tray fill ...



Cable tray length is selected based on the load to be supported, the distance between the supports (also referred to as the span), and handling and installation constraints.



Step-by-step cable tray and conduit installation method with safety, quality and inspection procedures as per IEEE standards.



There are a few types of cable trays including: solid-bottom trays, cable channel or trough trays, ventilated trays and ladder trays. There are a large number of cable tray fittings that are made ...



Learn how to install cable trays for large-scale projects with our professional, step-by-step guide covering industry standards, safety protocols, and efficient routing techniques.

Contact Us

For more information, pricing, or custom solutions, please contact us:

Website: <https://www.indzawo.co.za>

Email: sales@indzawo.co.za

Phone: +27 71 296 8473

Address: 22 Quantum Street, Midrand, 1685, Gauteng, South Africa

This document is for informational purposes only. Specifications subject to change without notice.

