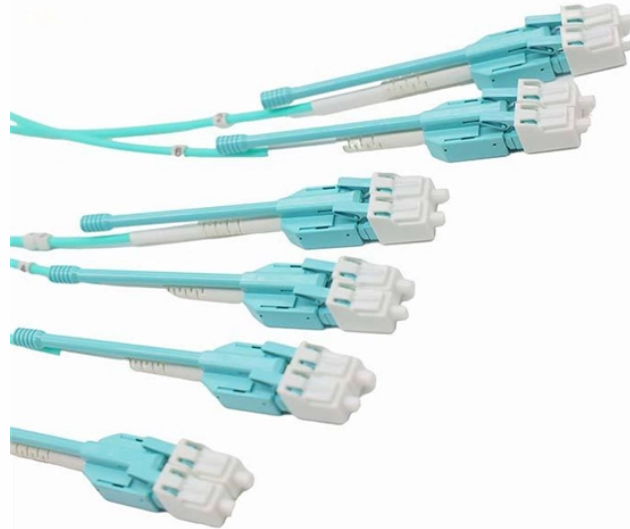


Cable tray fixing method at bends



Overview

The bends, tees, crosses, risers and reducers of wire mesh cable tray can be easily and quickly made live at the project by using a bolt cutter. Since the jaws of the bolt cutter drags a layer of zinc across the cut end and forms a protective layer. Students trading aid on how best to put an internal 90 degrees bend in steel cable tray. Whether you're managing a new installation or upgrading existing electrical infrastructure in Karachi, this technical guide from Tech&Tray's electrical. Unlike perforated trays, bends can be created directly at site without expensive fittings. Horizontal 90° Bend (Flat Bend) 2.



Cable tray fixing method at bends



Discover the best techniques and tools to bend cable tray easily and efficiently. Learn step-by-step instructions and tips from industry experts.



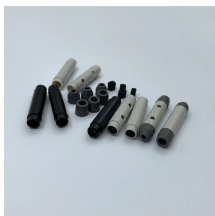
Creating bends in wire mesh cable trays is simple, fast, and cost-effective when done correctly. With proper cutting and bending techniques, you can achieve professional cable routing without additional ...



The document provides instructions for forming various bends and joints in electrical trunking and cable trays. It describes: 1) How to mark and cut a right-angle ...



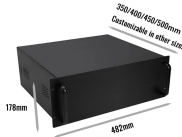
Discover the best fixing and mounting options for cable trays and wire mesh basket trays. CMW shares tips for efficient cable management.



Guide for making bends, tees, crosses, risers and reducers from straight sections of wire basket cable trays live at the project.



Some applications may require the cable tray to support the weight of a single, dead object in addition to the cable loads. Specifications typically require this to be applied at the midpoint of the span between ...



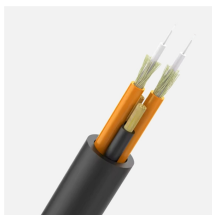
The document provides instructions for forming various bends and joints in electrical trunking and cable trays. It describes: 1) How to mark and cut a right-angle internal bend in a section of trunking, ...



A single length of cable ladder, cable tray or channel mounted on, but not restrained by two supports, represents a simply supported beam (Figure 2a), which will bend as any load is applied to it with the ...



This is a step by set guide on how to make (fabricate) a 90 degree bend in metal cable tray and use a cable tray bending machine to make the same bend. Videos are training aids for City and Guilds (C and G) and EAL courses ...



Students trading aid on how best to put an internal 90 degrees bend in steel cable tray. Includes a full demonstration on how bend steel cable tray using a crimping to.



Learn the best methods How to Fix Cable Tray Bends in Pakistan. Step-by-step guide for proper alignment, tools required.

Contact Us

For more information, pricing, or custom solutions, please contact us:

Website: <https://www.indzawo.co.za>

Email: sales@indzawo.co.za

Phone: +27 71 296 8473

Address: 22 Quantum Street, Midrand, 1685, Gauteng, South Africa

This document is for informational purposes only. Specifications subject to change without notice.

