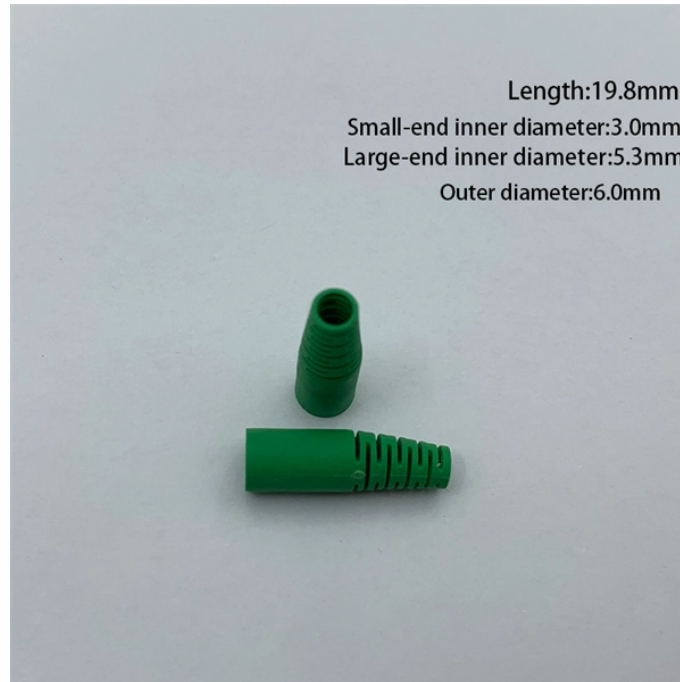
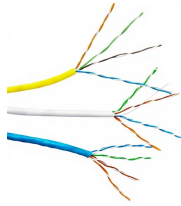


Cable tray can be turned at any angle



Cable tray can be turned at any angle



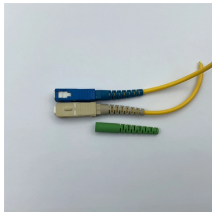
Our wind certification report provides you with list of acceptable B-Line series cable tray supports, fittings and covers based off of the environmental conditions, cable loading, and type of cable tray in your ...



Our hand-bendable cable trays have built in mounting rings that attach to any surface at any angle without struts or trapezes. The prefabricated 801 Series Mega Snake system hangs from a ...



This 90 degree tray offers a 24in bend radius for ease of coax installation. Connects to any ASP cable tray with splice clamps provided.



The Cable Tray can be laid concurrently with mechanical piping work and the cables can then be simply pulled over the laid trays, with fewer chances of cable damage, after all the other works have been ...



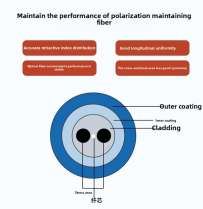
This document provides installation guidelines for cable trays, including: 1) Cable trays come in perforated and ladder types, with perforated trays made of steel ...



When fitting cable trays and their accessories, the products are cut on site to create changes of direction, adjust sections, etc. Damage can also occur during handling; as a result, both the ...



Elbow joint RVS is pushed inside the cable tray and attached with the included screw set. Elbow joint RVS can be used to change a cable tray's horizontal orientation with a range of -90° - $+90^{\circ}$.



Bend side wires on both sides of the tray and reassemble using adjustable clamps to attach side rail edge and universal splices to attach tray bottoms. To form a horizontal cross, proceed in the same ...



Hubbell's NEXTFRAME® Ladder Tray is the effective and widely used cable runway that supports and delivers bundles of cable between cabinets, racks, and closets, along walls, and suspended from ...



Installing cable tray support brackets at an angle can offer benefits such as enhanced load distribution, increased cable management space, and improved aesthetics.



TechLine Mfg perforated angle & channel cable trays from hot dipped galvanized, aluminum, & 304 SS finishes available. Contact us for a quote!

Contact Us

For more information, pricing, or custom solutions, please contact us:

Website: <https://www.indzawo.co.za>

Email: sales@indzawo.co.za

Phone: +27 71 296 8473

Address: 22 Quantum Street, Midrand, 1685, Gauteng, South Africa

This document is for informational purposes only. Specifications subject to change without notice.

