

# Indzawo Optic Connect

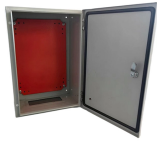
## Cable tray busbar



## Cable tray busbar



The use of cable tray systems for power distribution requires detailed knowledge of electrical installation characteristics. For installations with long runs, it is particularly important to ...



Discover the differences between busbar systems and cable trays for efficient power distribution solutions. Understanding busbars is crucial for efficient power distribution.



Chalfant Ladder Cable Tray Systems are ideal for indoor and outdoor cable management. They provide reliability, ease of installation, and cost savings both initially and long term.



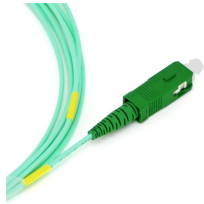
In this interactive page, you can explore our busbar system, cable tray, support system, lighting system, and fit-out products interactively for healthcare complexes, data centers, small workshops, electric ...



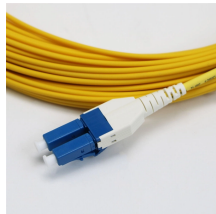
Busway (also known as bus duct) is a raceway consisting of metal enclosures containing factory mounted, bare, or insulated conductors. These conductors are usually copper or aluminum bars, ...



Learn how busbar duct systems work, the types (sandwich, open, plug-in), current ratings, and when to choose busbar duct over cable tray in power distribution.



They consist of insulated conductive bars housed within a durable metal casing, such as sheet metal or aluminum. Power is distributed efficiently through tap-off boxes, which can be safely connected or ...



V a well Power Solutions provides high-quality busbar and cable management solutions designed to ensure efficient, organized, and reliable power distribution in complex electrical installations.



In this interactive page, you can explore our busway system, cable tray, support system, lighting system, and fit-out products interactively for healthcare complexes, data centers, small workshops, electric ...



Limited Mechanical Protection: Cable trays do not provide the same level of physical protection as cable bus systems, making them less suitable for harsh environments or areas with high risk of physical ...

## Contact Us

For more information, pricing, or custom solutions, please contact us:

Website: <https://www.indzawo.co.za>

Email: [sales@indzawo.co.za](mailto:sales@indzawo.co.za)

Phone: +27 71 296 8473

Address: 22 Quantum Street, Midrand, 1685, Gauteng, South Africa

This document is for informational purposes only. Specifications subject to change without notice.

