

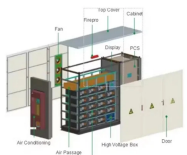
Cable tray assembly inspection



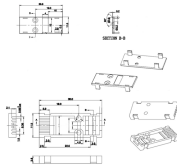
Cable tray assembly inspection



This article is about ITP (Inspection Test Plan) Plan for Cable Tray and Accessories Installation.



A generic guideline developed by the Cable Tray Institute indicates that cable trays should not be filled in excess of 40-50% of the inside area of the tray or of the tray's maximum weight based on the cable ...



Use this structured inspection guide to ensure the physical and fire-resistant integrity of cable tray covers across critical facilities. Assess mounting, labeling, fire stopping, and documentation against NFPA, ...



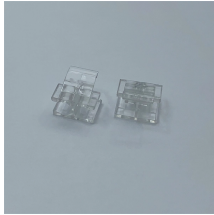
Cable Tray Inspection - Key Technical and Structural Considerations When inspecting cable trays, several technical and structural aspects must be checked to ensure safety, efficiency, and ...



The Cable Tray Institute is making available the current edition of this practical guide for the proper installation of aluminum or steel cable tray systems. These guidelines will be useful to engineers, ...



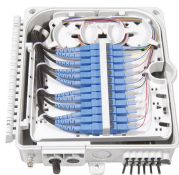
Failure to inspect cable tray support structures and fixings regularly can lead to electrical safety hazards, equipment failures, and even fires. In addition to these risks, non-compliance with regulatory ...



Thus while maintenance, installation and inspection of cable trays, the following concerns should be given attention. Cable trays must be properly fitted and supported according to the installation ...



This checklist is used to inspect cable trays, trunking, and conduits during installation.



In this detailed guide, we'll explore the essential inspection methods for cable trays, focusing on maintaining their structural integrity, load-bearing capacity, fire resistance, and more.



Step-by-step instrumentation cable tray installation guide with safety tips, standards, inspections, and downloadable Excel checklist.

Contact Us

For more information, pricing, or custom solutions, please contact us:

Website: <https://www.indzawo.co.za>

Email: sales@indzawo.co.za

Phone: +27 71 296 8473

Address: 22 Quantum Street, Midrand, 1685, Gauteng, South Africa

This document is for informational purposes only. Specifications subject to change without notice.

