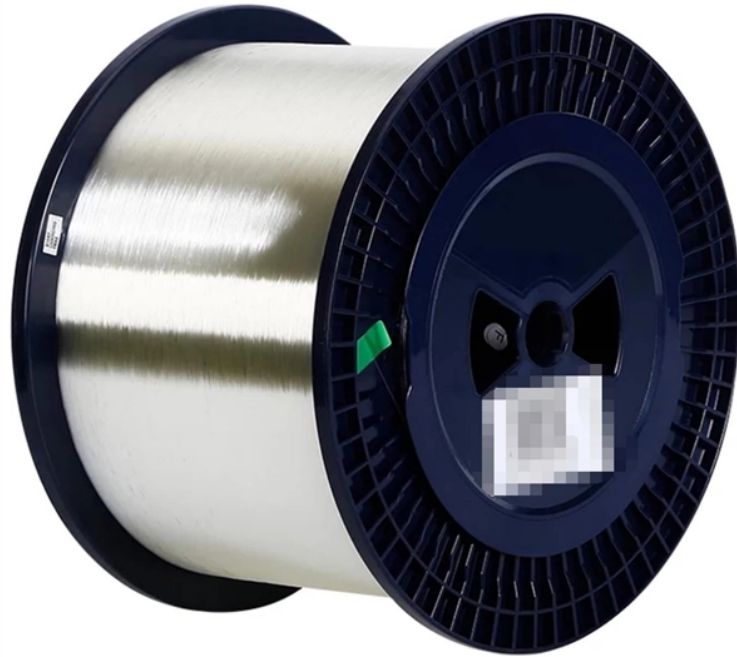


Cable Distance Requirements for Secondary Distribution Boxes



Cable Distance Requirements for Secondary Distribution Boxes



When installing insulated conductors of 4 AWG or larger, the minimum dimensions of pull or junction boxes installed in a raceway or cable run must comply with 314.28 (A) (1) through (A) (3). The rules ...



The minimum approach distance chart defines safe working distances to prevent arc flash injuries. Based on NFPA 70E and OSHA standards, it helps protect electrical workers by specifying ...



When installing insulated conductors of 4 AWG or larger, the minimum dimensions of pull or junction boxes installed in a raceway or cable run must comply with 314.28 ...



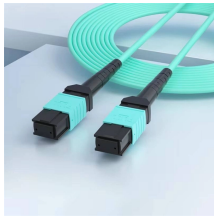
Abstract: The design, installation, and protection of wire and cable systems in substations are covered in this guide, with the objective of minimizing cable failures and their consequences.



When power lines and communication cables (telephone, cable television, internet) share the same utility pole, they need enough vertical separation to prevent a fallen power line from ...



If the customer cable requirements exceed two sets of cable per phase, the service must be installed underground. The customer will be required to pay the incremental cost between our ...



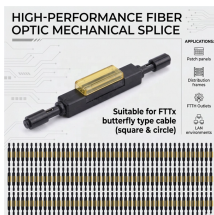
Application This standard describes requirements for installing secondary three-phase services up to 1600 A 120/208 V and 347/600 V supply on private property.



Ensure that any new installed secondary-distribution cable is not smaller, either in size or in number of runs, than the largest new service that is on the load side of that new secondary system.



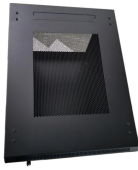
Actual cable lengths from cable footage markings shall be documented. Any cable, which is found to be defective, shall be repaired or replaced at the Vendor's expense.



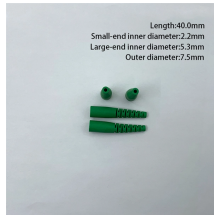
Use this chart when planning underground branch circuits and feeders to match conductor size with breaker load and distance. Note: While 3% is the recommended design limit for ...



This document represents the minimum requirements and specifications for the installation of the electrical underground distribution systems fed from padmounted transformation, serving Secondary ...



For power systems operating at less than 480V, including all conduit and cables used for electrical power distribution, maintain a minimum separation distance of 0.6 m (2 ft) from all ...



A minimum of 24 inches of cover for secondary (0 – 750 V) electric service, or 36 inches minimum cover for primary (over 750 V) is required. Cover is the distance from the outer surface of an underground ...



As a result of locating power transformers and their close-coupled secondary switchboards as close as possible to the areas of load concentration, the secondary distribution ...

Contact Us

For more information, pricing, or custom solutions, please contact us:

Website: <https://www.indzawo.co.za>

Email: sales@indzawo.co.za

Phone: +27 71 296 8473

Address: 22 Quantum Street, Midrand, 1685, Gauteng, South Africa

This document is for informational purposes only. Specifications subject to change without notice.

