

# **Cabinet Installation and Distribution Box Dimensions**



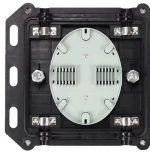
## Cabinet Installation and Distribution Box Dimensions



Electrical enclosure sizes are not universal, but most manufacturers follow common size families. This guide explains typical wall-mount and floor-standing dimensions, how to read catalog ...



Easy Installation: With a panel size of 4.6 x 2.6 inches and a box depth of 1.4 inches, this floor outlet box is easy to install in wood, concrete, or tile floors. It includes an ...



Explore standard panel sizes, applications, and key differences for residential, commercial, and industrial use.



Under Cabinet Distribution Box, Slim Features  
Mounting hardware included Available with nylon or metal cover Custom configurable, accepts any decorator style device



The suggested dimensions and internal structural layout of electrical control boxes are essential for ideal performance and safety. Key factors include environmental conditions, future expansion needs, and ...



Installation must follow design drawings, starting with easily accessible points and using appropriate machinery. Professional supervisors shall oversee the process to eliminate hazards, ensuring ...



Please carefully read this manual before the installation, operation, run, maintenance, and inspection of the product, and follow the contents of the manual to accurately install and operate this product.



This guide explains standard electrical box dimensions by type, compares common sizes, and helps you select the right box for residential, commercial, and light industrial applications.



To allow the door to open 180 degrees, the exposed cabinet dimension from the exterior wall must be a minimum of 3 in. (76 mm) for both 4 in. and 6 in. stud construction. A system ground must be ...



Safety First: Equipped with a 20 AMP GFCI safety outlet, this distribution box helps prevent electrical shocks and fires. CAPACITY RATING: Heavy-duty 20 AMP ...



Its compact dimensions of 430mm (depth) x 590mm (width) x 660mm (height) and weight of 18 kg make it easy to install and maneuver. Upgrade your telecommunications infrastructure with this reliable and ...



When you compare electrical junction box sizes, remember that single gang boxes offer a compact footprint but can be scaled up for industrial needs. Linkwell's expertise ensures you get a ...



Easy Installation: With a panel size of 4.6 x 2.6 inches and a box depth of 1.4 inches, this floor outlet box is easy to install in wood, concrete, or tile floors. It includes an installation kit for a straightforward setup.

## Contact Us

For more information, pricing, or custom solutions, please contact us:

Website: <https://www.indzawo.co.za>

Email: [sales@indzawo.co.za](mailto:sales@indzawo.co.za)

Phone: +27 71 296 8473

Address: 22 Quantum Street, Midrand, 1685, Gauteng, South Africa

This document is for informational purposes only. Specifications subject to change without notice.

