

Busbar of high-voltage switchgear



Busbar of high-voltage switchgear



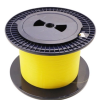
Avoid certification failures and costly redesigns. This guide compares IEC, ANSI, and GB busbar standards with real project cases and compliance tools.



A busbar is a metallic bar or strip—typically copper or aluminum—mounted inside switchgear/switchboards to distribute high currents. Flat profiles maximize surface area for cooling ...



Typical busbar applications include switchgear, panel boards, power invertors, powered electronics, and high-voltage battery packs. Eaton offers numerous busbar manufacturing technologies, ensuring the ...



A busbar is a metal bar, usually made of copper or aluminum, that carries electricity inside switchgear. It connects the incoming power to circuit breakers and outgoing circuits, helping power ...



It is lack of relatively perfect scheme for the design of 10kV large-current switchgear above 4000A, in particular with many problems on selection and design of



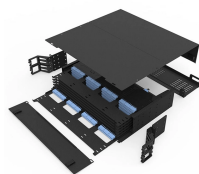
Switchgear Busbar Design switchgear busbar sizing busbar current rating temperature rise switchgear short time withstand IEC 62271 IEC 61439 IEC 60076 Power distribution FAQ What ...



This article serves as a definitive guide, exploring the technical supremacy of rigid busbar architecture and why it is the inevitable future for high-performance switchgear.



A busbar is a metallic bar or strip—typically copper or aluminum—mounted inside switchgear/switchboards to distribute high currents. Flat profiles maximize surface area for cooling ...



This paper discusses the advantages and limitations of cable connections, rigid bus bar connection and flexible bus bar connections for high current density applications.



The starting point for planning a switchgear installation is its single line diagram. This indicates the extent of the installation, such as the number of busbars and branches, and also their ...



In high-voltage (HV), extra-high-voltage (EHV), and outdoor medium-voltage (MV) systems, bare busbars and connectors are typically used, with conductors available in tubular or stranded-wire ...

Contact Us

For more information, pricing, or custom solutions, please contact us:

Website: <https://www.indzawo.co.za>

Email: sales@indzawo.co.za

Phone: +27 71 296 8473

Address: 22 Quantum Street, Midrand, 1685, Gauteng, South Africa

This document is for informational purposes only. Specifications subject to change without notice.

