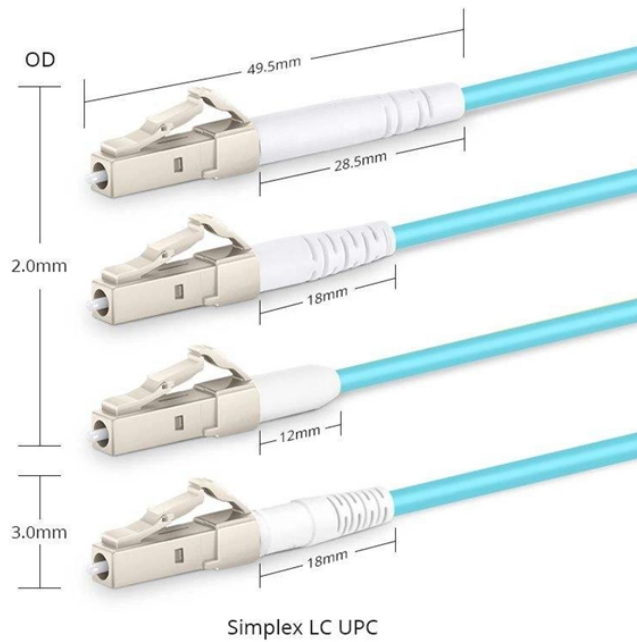
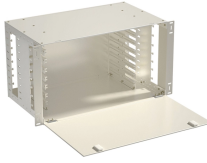


Belgian manufacturer of 2 5G optical receivers



Belgian manufacturer of 2 5G optical receivers



Skylane Optics offers the full range of transceivers with an unique set of services, such as testing, coding, customization, effective support & technical expertise. The transceiver-cable consists ...



FS 2.5G SFP solution with low power consumption provides an ideal connection option for 2.5G Ethernet over Cat5e cable, switch to switch interface, and AP/Router interface.



37 Companies and suppliers for optical-fiber-cable Find wholesalers and contact them directly Leading B2B marketplace Find companies now!



155M-2.5G CSFP BiDi GIGALIGHT's CSFP series optical transceiver modules include two single-fiber bidirectional channels, each supporting data rates from 155Mbps to 2.5Gbps.



In addition to our optical networking equipment, Precision OT's R& D efforts focus on integrated silicon photonics, signal processing, and software-defined networking.



ESTEL designs and manufactures high-performance optical transceivers in Europe and in the US, with local technical support and a secure supply chain. Our optical modules power demanding telecom ...



The modules are available with FC/APC or with SC/APC optical, and SMA RF connectors. Each 2.5GHz link has a transmitter (Tx) and a receiver (Rx) modules which may be controlled via RFOptic ...



Loss of signal (LOS) output indicates the loss of an input optical signal of receiver. The standard serial ID information compatible with SFP MSA describes the transceiver's capabilities, standard interfaces, ...



Discover all relevant Optical Sensor Manufacturers in Belgium, including Melexis and OIP N.V.

Contact Us

For more information, pricing, or custom solutions, please contact us:

Website: <https://www.indzawo.co.za>

Email: sales@indzawo.co.za

Phone: +27 71 296 8473

Address: 22 Quantum Street, Midrand, 1685, Gauteng, South Africa

This document is for informational purposes only. Specifications subject to change without notice.

