

# Belarusian AC distribution box specifications



## Overview

● The product is designed into three serial numbers according to current ratings. The GGD1-type cabinet has a rated current of 1000A, the GGD2-type cabinet has a rated current of 1600A, and the GGD3-type cabinet has a rated current of up to 3150A. ● The product's protection level is IP30. The YCQ9-250 200 Amp Automatic Transfer Switch (ATS) provides reliable, automatic power source switching for critical backup systems. It connects MCCB (Moulded Case Circuit Breaker), MCB (Miniature Circuit Breaker), SPD (Surge protection Device), AC Power Socket, Gateway, Power adapter etc. A provision can also be made in ACDB to monitor the consumption of power from SPV Power Plant. The GGD type AC low-voltage distribution panel is a technical development project issued by the former Ministry of Energy in 1992, with the premise of promoting the technological progress of China's low-voltage distribution industry and accelerating the upgrading of low-voltage distribution complete. There are many specifications and models of Distribution box. Low-voltage fixed switchgear GGD series: Mainly used in power industries such as substations and power plants, with high breaking. If you are examining for a leading Belarus Distribution Box Manufacturer that has specialized in

Electronics & Electrical, then Blazing Electric Co. is a uppermost venture in.

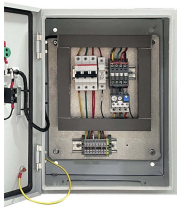
## Belarusian AC distribution box specifications



Practice shows that for capacities below 315kVA, forced ventilation is not required for full load operation of the box transformer. In extremely cold and humid areas, heating and dehumidifying devices are ...



The document specifies the quantities and descriptions of distribution boxes, cables, and an online UPS system. It includes 6 items of distribution boxes for control rooms, stages, and near the UPS with ...



If you are examining for a leading Belarus Distribution Box Manufacturer that has specialized in Electronics & Electrical, then Blazing Electric Co., Ltd. is the best option.



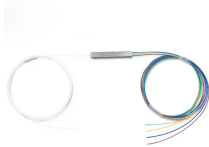
The above are only some common distribution box specifications and features. When making actual selections, it is necessary to comprehensively consider factors such as specific usage ...



The GGD type AC low-voltage distribution panel is a technical development project issued by the former Ministry of Energy in 1992, with the premise of promoting the technological progress of China's low ...



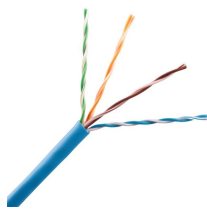
There are various types of junction boxes based on system capacity. This solar AC distribution box have strong capabilities of ageing resistance and UV resistance. It is durable, everlasting, waterproof and ...



Our ACDBs are designed to deliver high performance and added protection by isolating inverter from mains as and when required. All of HPL- AC Distribution boxes are tested/certified as per IEC/IS ...



Belarus MNS Low Voltage Withdrawable Switchgear Widely used in power generation, construction, steel, cement, mining, petrochemical, and other power supply and distribution systems



A customized low-voltage power distribution cabinet designed for equipment power supply, motor control, and system protection in a local manufacturing workshop.

## Contact Us

For more information, pricing, or custom solutions, please contact us:

Website: <https://www.indzawo.co.za>

Email: [sales@indzawo.co.za](mailto:sales@indzawo.co.za)

Phone: +27 71 296 8473

Address: 22 Quantum Street, Midrand, 1685, Gauteng, South Africa

This document is for informational purposes only. Specifications subject to change without notice.

