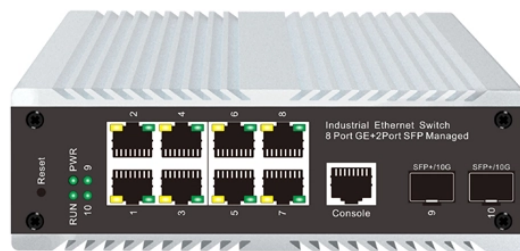


## Bahamas Terminal Box Selection



### Overview

When shipping a full container to the Bahamas, the size you choose (20ft, 40ft or 40ft High Cube), the port you target (Nassau or Freeport), and how you structure the paperwork will determine your total landed cost, transit time, and the likelihood of delays. you will find details about our array of capabilities and activities, from state-of-the-art cargo handling to our cargo warehousing and consolidation space. For the most recent information on weather conditions, tariffs, berthing availability, forms, customs and Port news, please visit our site. Hutchison Ports FCP was opened in 1997 by Hutchison Ports. It contains 57 hectares of stacking area and capacity to handle 1. Do you have a question?

Did you know we offer worldwide services, for both Air and Sea?

Did you know we offer a Door to Door service to Barbados?

Did you know you can buy empty packaging from us?

Book online at any time using our new mobile app designed to make your shipments simple and efficient all in one place. Location: Nassau, the capital of the Bahamas, is situated on the N shore of New Providence Island approx 180nm SE of Miami. General overview: The port handles a wide range of cargoes and containers and has now become a major port of call for cruise vessels, with seven berths available alongside. We are proud of our current port and are working hard with our partners to build the port of the future.

## Bahamas Terminal Box Selection



Nassau, Bahamas (BSNAS) – Real-time data on arrivals, departures, ships in port, and scheduled vessels. Access weather forecasts and trade insights to optimize logistics operations at Nassau Port.



Explore Nassau Port in Bahamas with ease on our Port Finder Page. Uncover valuable insights about Nassau 's shipping port, including freight rates, schedules, dwell times, primary carriers, port news, ...



The 56-acre port facility is located on Arawak Cay, just two miles west of Downtown Nassau at the mouth of Nassau Harbor. The Port provides facilities for both domestic and international bulk, break ...



Details about Freeport Container Port (BSFPO-0004) Facility Details Facility Description: Freeport Container Port (Container Transhipment Terminal)



Freeport Container Port commenced operations in 1997. It is located on Grand Bahama Island — one of the largest islands in the Commonwealth of the Bahamas — and is situated about 100 miles from the ...



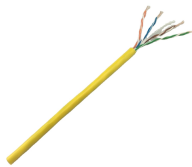
When shipping a full container to the Bahamas, the size you choose (20ft, 40ft or 40ft High Cube), the port you target (Nassau or Freeport), and how you structure the paperwork will determine your total ...



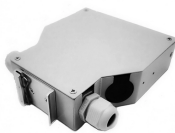
Definition: This entry lists major ports and terminals primarily on the basis of the amount of cargo tonnage shipped through the facilities on an annual basis. In some instances, the number of ...



Containers are screened as early in the supply chain as possible, generally at the port of departure. Use technology to prescreen high-risk containers to ensure that screening can be done rapidly without ...



Listing of Docks and Harbours There are twenty-four (24) port facilities that are ISPS compliant in the Bahamas.



As an involved corporate citizen in the Bahamas, the Nassau Container Port sponsors or participates in numerous programs to support local business, fulfill community needs and educate the shipping ...

## Contact Us

For more information, pricing, or custom solutions, please contact us:

Website: <https://www.indzawo.co.za>

Email: [sales@indzawo.co.za](mailto:sales@indzawo.co.za)

Phone: +27 71 296 8473

Address: 22 Quantum Street, Midrand, 1685, Gauteng, South Africa

This document is for informational purposes only. Specifications subject to change without notice.

