

# Indzawo Optic Connect

## BJ Series Cable Trays



## BJ Series Cable Trays



As an industry leader in cable tray, Eaton offers one of the widest ranges of B-Line series cable management solutions in a variety of styles, materials and finishes to support virtually any industrial ...



Steel bonding jumpers provide reliable grounding across cable tray gaps, with fasteners included for laminated jumpers. Check specifications for proper use.



It is designed for mechanical support and strain relief in long runs of cable and creates a smooth gradual bend for cable. Rail and stringer material is 16 ga steel tubing.



Eaton's B-Line series cable tray systems are designed to help you save time, reduce complexity and maximize the return on your investment. From innovative commercial and industrial cable tray ...



Submittals for cable ladder and tray Eaton's submittal builder tool for B-Line series cable ladder and tray allows you to easily filter, select and download straight section, fitting and accessory submittals.



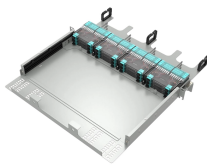
They are Reliable, Adaptable, Low-Maintenance, Low-Cost and Safe choices. Cable tray wiring systems offer significant advantages over conduit pipe and other wiring systems. Cable tray is less expensive, ...



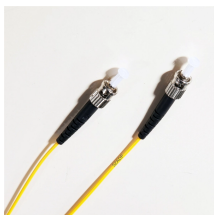
Choose from our selection of cable trays, including over 850 products in a wide range of styles and sizes. Same and Next Day Delivery.



ABB designs and manufactures cable tray systems, including perforated tray, cable ladder, channel tray and strut (metal framing), directly from production facilities in Canada and Saudi Arabia.



This document provides guidance on designing cable tray systems for commercial and industrial applications. It discusses key factors to consider such as cable tray types, lengths, strength, load ...



The flexible coupler provides easy installation without measuring and cutting cable tray side rails. Once installed, the coupler allows for electrical continuity, therefore eliminating the requirement for a ...



As the industry leader in cable tray, Eaton offers one of the widest ranges of B-Line series cable management solutions available in the market today. With ...



Any combination of the following types and sizes of copper conductor cable may be used: A. Max 300 pair, No. 24 AWG (or smaller) copper conductor ...

## Contact Us

For more information, pricing, or custom solutions, please contact us:

Website: <https://www.indzawo.co.za>

Email: [sales@indzawo.co.za](mailto:sales@indzawo.co.za)

Phone: +27 71 296 8473

Address: 22 Quantum Street, Midrand, 1685, Gauteng, South Africa

This document is for informational purposes only. Specifications subject to change without notice.

