

Average height of cable trays



Average height of cable trays



The entire amount of the cross-sectional areas for all of the single conductor cables that are going to be positioned in the cable tray needs to be equal to or less than the permissible cable ...



Our wind certification report provides you with list of acceptable B-Line series cable tray supports, fittings and covers based off of the environmental conditions, cable loading, and type of cable tray in your ...



Explore various cable tray types and sizes for electrical installations. Learn about ladder, perforated, solid-bottom, wire mesh, and channel



Cable Tray Technical Guide A practical guide to product selection and installation This guide for engineers and installers has been developed by ABB as a practical reference regarding cable tray ...



Calculate the average (mean) with our user-friendly tool. Discover how to find averages or perform quick calculations effortlessly.



In statistics the mean of a set of numbers is the average value of those numbers. Find the average or mean by adding up all the numbers and dividing by how many numbers are in the set.



In mathematics, it most commonly refers to the arithmetic mean, but may also refer to other measures such as other types of mean, the median, or the mode. Representation of the arithmetic mean, ...



Understanding the common sizes and types of cable trays can help in selecting the most suitable option for specific projects. In this article, we'll explore the typical dimensions, factors ...



Height and Thickness of Cable Trays The height of a cable tray impacts its capacity to hold cables, with common heights being 25 millimeters, 50 millimeters, 75 millimeters, and 100 millimeters.



The meaning of AVERAGE is a single value (such as a mean, mode, or median) that summarizes or represents the general significance of a set of unequal values. How to use average in a sentence.



AVERAGE definition: 1. the result you get by adding two or more amounts together and dividing the total by the number.... Learn more.



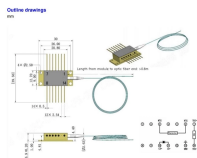
Learn how to calculate the perfect cable tray size and dimensions for your electrical project. This guide covers load capacity, fill ratios, and industry standards.



In accordance with its continuous improvement policy, Legrand reserves the right to change the specifications and illustrations without notice. All illustrations, descriptions and technical information ...



The mode is the value that occurs most often. This average can be used for non-numerical values, eg "red". The range is not an average. Instead, it is used to show how varied the data is.



Explore standard sizes by tray type, understand width and depth limits, and see how to calculate and choose compliant cable tray sizes for real projects.



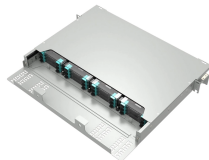
The mean (aka average) summarizes a dataset with a single number representing the center point or typical value. Learn how to find the mean.



The average formula is also known as the arithmetic mean, which is the ratio of the sum of all given observations to the total number of observations. Thus, using the average formula, the arithmetic ...



Explore standard sizes by tray type, understand width and depth limits, and see how to calculate and choose compliant cable tray sizes for real projects.



Free calculator to determine the average, or the arithmetic mean, of a given data set. It also returns the calculation steps, sum, count, and more.



In the context of mathematics and statistics, the word average refers to what's more formally called the mean, which is the sum of a set of values divided by the number of values.



Selecting the appropriate electrical cable tray dimensions is a critical decision that directly impacts the safety, efficiency, and longevity of any industrial or commercial electrical installation. ...

Contact Us

For more information, pricing, or custom solutions, please contact us:

Website: <https://www.indzawo.co.za>

Email: sales@indzawo.co.za

Phone: +27 71 296 8473

Address: 22 Quantum Street, Midrand, 1685, Gauteng, South Africa

This document is for informational purposes only. Specifications subject to change without notice.

