

Are single-row circuit distribution boxes safe for home use



Overview

A well-chosen distribution box ensures the safety and efficiency of your household electrical system. Let's explore how these critical components work and why they deserve your attention. Whether you live in a house, an apartment, condo, or any other type of dwelling, there's a circuit breaker panel box doing its job behind the scenes.



Are single-row circuit distribution boxes safe for home use



It provides a safe and secure enclosure for wiring connections, protecting against shocks, preventing short circuits, and minimizing the risk of fire. Understanding the diverse range of electrical boxes is ...



What is a Distribution Box? A distribution box, or DB box, is a circuit breaker enclosure. It is a vital part and central hub of any electrical system. The hub distributes electrical power from a ...



In this electrician's blog, we'll take you through the steps to figure out what kind of circuit breaker distribution panel your home has. We'll also look at whether it's good enough for your home, ...



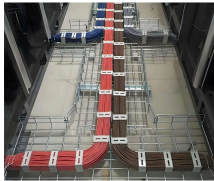
The correct choice and installation of distribution boxes are crucial for electrical safety, efficiency, and reliability. This guide provides an exhaustive overview of the different types of distribution boxes, ...



This article guides you through selecting a distribution box that is both affordable and safe, emphasizing key features, configuration, and practical considerations.



Learn how to choose the right home distribution box with our expert guide. Compare circuit capacity, IP ratings, breaker types & avoid common mistakes.



Distribution boxes form the foundation of safe and reliable electrical systems. Understanding their components, installation requirements, and maintenance needs helps you make ...



Either metal or plastic boxes can be used with non-metallic cable secured to the box with the appropriate clamp. All appliances and receptacles must attach to a ground wire or metal ...



A distribution boxes is an essential device that manages the safe and efficient flow of electrical power throughout different areas of a building or facility. It is commonly used in homes, ...



Learn about distribution boxes, their types, functions, and safety features to ensure efficient and secure electrical power distribution in any building.

Contact Us

For more information, pricing, or custom solutions, please contact us:

Website: <https://www.indzawo.co.za>

Email: sales@indzawo.co.za

Phone: +27 71 296 8473

Address: 22 Quantum Street, Midrand, 1685, Gauteng, South Africa

This document is for informational purposes only. Specifications subject to change without notice.

