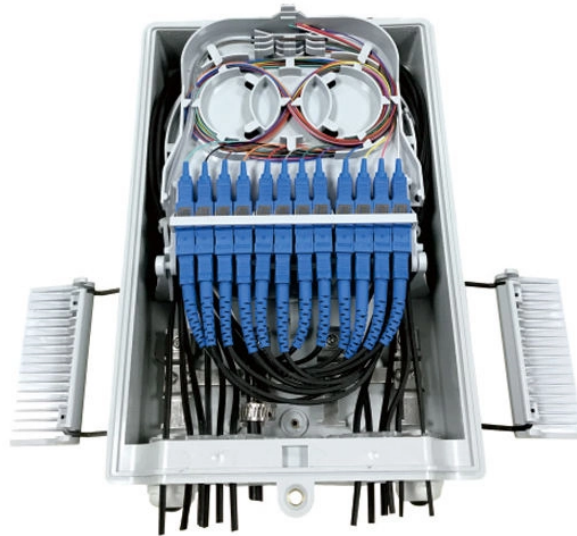


Are all distribution boxes grounded Price



Overview

Each DISTRIBUTION BOX and controller must be grounded. 26 mm² (10 AWG) ground wire must be used, and in all other markets a 6 mm² must be used. Grounding of the units: Attach a ground wire from one of. Which NEC rules apply to electrical cabinet doors?

Let's unpack a few key standards that apply: NEC 250. 28 (Box Materials): Metal boxes. In the event your product doesn't work as expected or you need help using it, Amazon offers free product support options such as live phone/chat with an Amazon associate, manufacturer contact information, step-by-step troubleshooting guides, and help videos. Here are the steps on how to ground a power distribution box: 1. Preparation: First, you need to prepare some necessary tools, including grounding wire, grounding rod, voltmeter, insulating gloves and. If you are standing in a half-finished warehouse or staring at a flickering panel in a residential complex, you've probably asked yourself: how much is a distribution box anyway?

It is the silent heart of any building, pumping electricity to every corner, yet

we only think about it when the lights. Collections: All products, Basic products, Catalog, Earthing accessories, earthing rod, plugs, Shielding Bed Sheets This convenient earthing distribution box with a standard connection cable (with pin) connects up to 4 standard connection cables of all our grounding products.

Are all distribution boxes grounded Price



With this convenient distribution box with a standard pin cable you can connect up to 4 grounding products with a grounded wall socket or a grounded extension cord in a grounded wall socket.



Product Summary: Southwire Temporary Power X-Treme Box - 50A 125/250V Portable Power Distribution with 6 5-20 U-Ground/Straight Blade Receptacles - Rugged Steel Construction



This distribution box can be used for ground distribution as well — four 8-gauge ground wires come from the amps while the 4-gauge goes to your vehicle's chassis ground. A tough polycarbonate cover ...



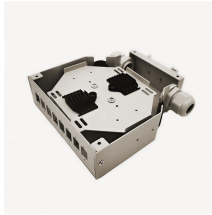
Overall, grounding a plastic distribution box is a process that requires specialized knowledge and skill. If you are not sure how to proceed, you should seek professional help. ...



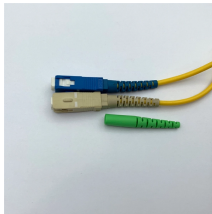
As long as it's bonded somewhere else in the run and all the connectors and lockrings and stuff are listed and properly installed, you don't need to bond this. It's already bonded somewhere ...



What's the cheapest option available within Grounding Bars? Check out our lowest priced option within Grounding Bars, the Bonding Screw by GE. What are a few brands that you carry in Grounding ...



This distribution box can be used for ground distribution as well — four 8-gauge ...



If you have more than one circuit in the box, tying all the grounds together is not necessary as long as you separate the EGC's of each individual circuit and make sure they are all ...



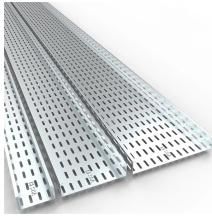
If you've ever found yourself scratching your head over whether that metal door on your distribution cabinet really needs a grounding wire, you're not alone. In factories, construction sites, ...



With this convenient distribution box with a standard pin cable you can connect up to 4 grounding products with a grounded wall socket or a grounded extension cord ...



Each DISTRIBUTION BOX and controller must be grounded. On the US market, a 5.26 mm² (10 AWG) ground wire must be used, and in all other markets a 6 mm² must be used.



The Price Landscape: Breaking Down the Costs
When you start looking for a distribution box, you'll quickly realize the price range is wider than a highway. You might find a small plastic unit for the ...

Contact Us

For more information, pricing, or custom solutions, please contact us:

Website: <https://www.indzawo.co.za>

Email: sales@indzawo.co.za

Phone: +27 71 296 8473

Address: 22 Quantum Street, Midrand, 1685, Gauteng, South Africa

This document is for informational purposes only. Specifications subject to change without notice.

