

## Are SC optical modules and LC single-fiber optical modules interchangeable



### Overview

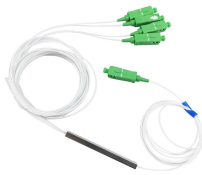
If you are upgrading a network switch or deploying fiber to the home (FTTH), you will inevitably face the connector choice: LC vs SC. While both are proven fiber connectors, they are not interchangeable on SFP modules. Choosing the wrong one can lead to costly restocking fees or project delays. This connector landscape reflects how modern SFP deployments prioritize port density and Small Form-factor Pluggable (SFP) modules, which connect network devices like switches, routers, and servers to fiber optic cable connector, have become a standard component in modern networks.



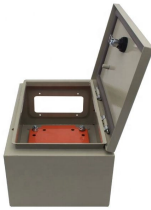
## Are SC optical modules and LC single-fiber optical modules interchangeable



When existing fiber infrastructure terminates with SC connectors, adapters or hybrid patch cables are required to interface with LC-based SFP modules. This approach preserves existing cabling while ...



Although both connectors deliver reliable optical performance, they are designed for different priorities and deployment scenarios. This guide explains the practical differences between ...



Q3: What is the difference between SC and LC connectors? A: LC is smaller (half the size of SC) and supports higher port density, making it the preferred option in data centers.



The Small Form-factor Pluggable, or SFP, is a compact, hot-swappable transceiver used in telecom and data center networks. It enables flexible, scalable fiber connectivity by supporting ...



With the increasing demand for high-speed optical communications in data centers, enterprise networks, and carrier networks, 10G BiDi SFP+ optical modules have become a ...



Fiber optic systems rely on either single-mode or multimode fibers, and connector choice directly affects performance. LC and SC connectors support both fiber types, but their practical applications and ...



If you are upgrading a network switch or deploying fiber to the home (FTTH), you will inevitably face the connector choice: LC vs SC. While both are proven fiber connectors, they are not interchangeable on ...



Q3: What is the difference between SC and LC connectors? A: LC is smaller (half the size of SC) and supports higher port density, making it the ...



While both SC SFP module and LC SFP module serve the same purpose of establishing a connection between the network device and fiber optic cable, they differ significantly in design, ...



LC SFPs are the preferred choice in most conventional networks because they are widely available, cost-effective, and compatible with modern systems. However, SC SFPs remain a viable ...



The two most common fibre optic connectors in use today are SC and LC connectors. While they are very similar, they are not interchangeable and differ in design and size.

## Contact Us

For more information, pricing, or custom solutions, please contact us:

Website: <https://www.indzawo.co.za>

Email: [sales@indzawo.co.za](mailto:sales@indzawo.co.za)

Phone: +27 71 296 8473

Address: 22 Quantum Street, Midrand, 1685, Gauteng, South Africa

This document is for informational purposes only. Specifications subject to change without notice.

