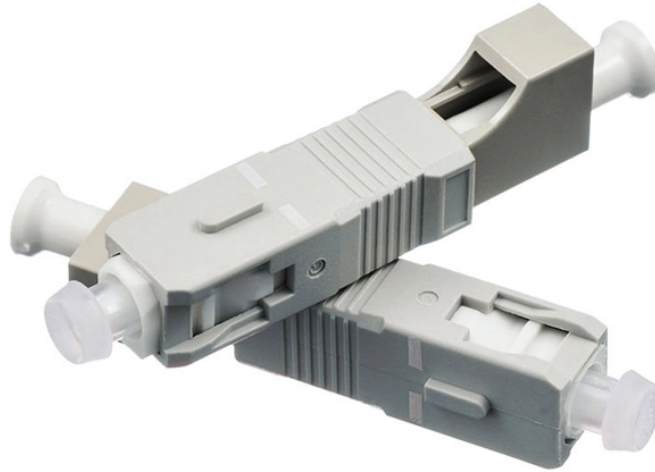


# **Anti-CRT Optical Network Switches Available Now**



## Anti-CRT Optical Network Switches Available Now



It can be switched automatically using an optical switch. By using optical switches for equipment redundancy and transmission line redundancy, it is possible to significantly reduce network ...



The fastest, smallest, most reliable optical switches in the industry. Used in medical devices, undersea cables, quantum computers, underground and outer space.



With support for Software-Defined Networks (SDNs) via embedded NETCONF and RESTCONF control interfaces, the POLATIS Series 7000 can route time-critical traffic with very low-latency to enable ...



The OCS optimizes data center networks by minimizing electrical switches and optical-electrical-optical (OEO) conversions, resulting in significant cost savings, reduced power consumption, and improved ...



Our Ethernet network switches with fiber ports comes in managed or unmanaged formats combined with both Industrial and Commercial grades. Utilize our PoE switches to power your Ethernet devices ...



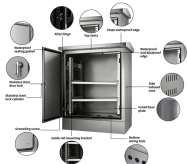
Move Ethernet to 400G and 800G Beyond •  
Explore 400G/800G Ethernet Optical Transceivers  
for High-Speed Interconnect.



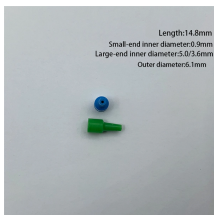
Using Cisco Nexus 9000 Series data center switches and solutions, they unified and automated data centers to save time and resources. Now they can adopt new technologies more efficiently than ever ...



Calient's Optical Circuit Switch (OCS) - S320 is an all-optical (OOO) switch that establishes, monitors, and changes connections between single-mode optical fibers. The OCS is transparent to data speed ...



Test data from Broadcom and Meta demonstrate that by eliminating numerous electrical interfaces between the optical modules and the switch ASIC, CPOs not only offer lower latency but also ...



Length: 14.8mm  
Small-end inner diameter: 9mm  
Large-end inner diameter: 5.0/3.6mm  
Outer diameter: 11mm

Test data from Broadcom and Meta demonstrate that by eliminating numerous electrical interfaces between the optical modules and the switch ASIC, CPOs not ...



This product can be ordered in standard simplex or duplex configurations, and customized port arrangements are available upon request. Op-tical power monitors and attenuators can be added to ...

## Contact Us

For more information, pricing, or custom solutions, please contact us:

Website: <https://www.indzawo.co.za>

Email: [sales@indzawo.co.za](mailto:sales@indzawo.co.za)

Phone: +27 71 296 8473

Address: 22 Quantum Street, Midrand, 1685, Gauteng, South Africa

This document is for informational purposes only. Specifications subject to change without notice.

