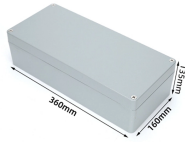


Angle iron for making cable trays



Angle iron for making cable trays



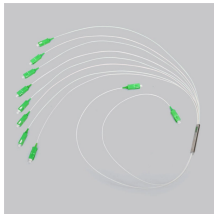
Angle iron with lengthwise/longitudinal slots 7x30mm on one side for universal ...



Discover the detailed process on how to produce cable trays, covering everything from material selection to assembly and surface treatment. ...



Angle iron with lengthwise/longitudinal slots 7x30mm on one side for universal support. Can be used to support cable trays, cable ladders and electrical installations.



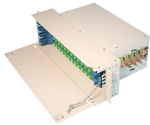
Find durable cable tray angles in slotted steel or FRP with CE certification. Ideal for industrial cable management & telecom systems.



TechLine Mfg perforated angle & channel cable trays from hot dipped galvanized, aluminum, & 304 SS finishes available. Contact us for a quote!



Slotco is among the leaders in making Slotted Angles & Storage Systems, pallet racks, pallet racking system, bins, sections and related accessories for all sections of industry from heavy engineering to ...



High strength Angle trays are designed for heavy-duty power distribution in industrial facility, which is fabrication using MS angle and Flats / Strips available which Powder Coating / Painted / Hot Dip ...



As a source manufacturer, we offer a full range of custom hot-dip galvanized angle iron, including equal/unequal-legged, perforated, and slotted configurations, meeting the rigid support requirements ...



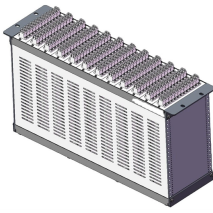
Common cable tray accessories include cable ties, cable clips, cable ladders, and cable management kits. They are available in different materials, such as metal, plastic, and fiber, and can be ...



By applying the following formula you can quickly find the size of cut out section that you need to cut out of the side of the cable tray, or gutter-type section to make that angle.



NEMA VE 1-2017 Specifies requirements for metal cable trays and associated fittings designed for use in accordance with the rules of Canadian Electrical Code, Part I and the National Electrical Code®



Perforated angle & channel is designed to be a tubing and cable support system which utilizes bolt together fittings to route tubing or cable runs in an industrial application.



Usage: is used in regulating the conduct of cables, repair and detection of breakdowns inexpensive, Add and modify cables easily, Protect cables from ...

Contact Us

For more information, pricing, or custom solutions, please contact us:

Website: <https://www.indzawo.co.za>

Email: sales@indzawo.co.za

Phone: +27 71 296 8473

Address: 22 Quantum Street, Midrand, 1685, Gauteng, South Africa

This document is for informational purposes only. Specifications subject to change without notice.

