

Also configure the access switch to Layer 3



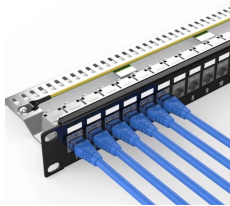
Also configure the access switch to Layer 3



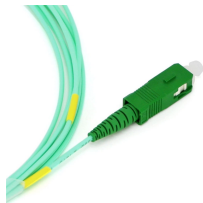
In this section, you configure inter-VLAN routing using Layer 3 switches. Modern enterprise networks rarely use router-on-a-stick because it does not scale easily to meet requirements. In these very ...



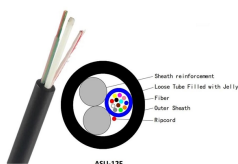
This example describes how to create Layer 3 subinterfaces on trunk interfaces of a distribution switch and access switch so that you can route traffic among multiple VLANs:



Configuration commands covered in this article are applicable to all Cisco Catalyst Layer-3 switches.



Below is a diagram that we can use as a reference in understanding how to configure Inter-VLAN routing and test inter-switch connectivity across the network before configuring its routing capability.



Configuration commands covered in this article are applicable to all Cisco Catalyst Layer-3 switches.



All Ethernet ports are switched interfaces by default. You can change this default behavior with the CLI setup script or through the system default switchport command. You can assign an IP address to the ...



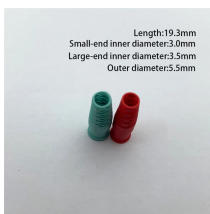
The access switch will also need to be configured appropriately to place client traffic in the voice and data VLANs. Please see the Related KBs section for more details on how to configure switch ports.



At the end of this article you will find also important routing configuration commands for the ASA and also how to use Access Control Lists (ACL) on the Layer 3 switch to control traffic (permit or deny) ...



These switches can also perform bridging functions at each interface, contain broadcasts, and they also allow us to group switching interfaces to increase bandwidth.



Capabilities of a multilayer switch include the ability to route from one VLAN to another using multiple switched virtual interfaces (SVIs), as well as the ability to convert a Layer 2 switchport ...



To enable SwitchA and SwitchB to communicate with each other and provide high link bandwidth, Layer 3 Eth-Trunk interfaces need to be used between SwitchA and SwitchB. In addition, ...

Contact Us

For more information, pricing, or custom solutions, please contact us:

Website: <https://www.indzawo.co.za>

Email: sales@indzawo.co.za

Phone: +27 71 296 8473

Address: 22 Quantum Street, Midrand, 1685, Gauteng, South Africa

This document is for informational purposes only. Specifications subject to change without notice.

